

Jackson County, North Carolina

Demographic Information



Prepared by
Jackson County Planning Department
401 Grindstaff Cove Road
Sylva, NC 28779
828.631.2255
planning@jacksonnc.org

Population Overview

The 2010 Census population count for Jackson County of 40,271 residents indicates that the County experienced a significant increase in population during the period from 2000 to 2010. During this decade, the County's population grew 21.6%. The population growth during this period continues a trend that began in 1970, with the County's population increasing 50% in the 20 year period 1990 – 2010 and by 45% during the 20 year period 1960 – 1980 (see Table 1). A slower rate of growth, 4%, was experienced during the decade 1980 – 1990. It is difficult to predict future population growth, but if past trends continue, the County can anticipate continued population growth and an increasing need for the programs, facilities, and services required by a growing population. The straight line population projection in Table 3, prepared by the Office of State Management and Budget, predicts Jackson County's population will be 46,915 in 2020 (15% increase) and 53,347 in 2030 (32% increase). While these numbers indicate a slower rate of growth during the next 20 years than the County has experienced in the past 20 years, they provide a good foundation upon which to base planning to meet future needs. Given the past population growth and the projections for continued steady population growth, the County can anticipate increased demand for all services. Details of past population growth provided by Census data can assist in identifying where and what type of services will be needed to meet future demands.

In addition to total population numbers, the Census also provides data on the characteristics of the County's population. The race characteristics of the population are provided in Table 4, with data showing that approximately 83% of the County's population is white. Jackson County is home to many members of the Eastern Band of the Cherokee, with approximately 9.5% of the County's residents identified as American Indian by the Census. Approximately 1.9% of the County's population is black and 2.75 of county residents are some other race alone. Persons of Hispanic or Latino ethnicity account for approximately 5% of the County's population (Table 5). The County's population is almost evenly divided between males and females, with 49.8% of residents male and 50.2% female (Table6).

An age breakdown of the County's population is provided in Table 7 and Table 8 provides a graph of the population by age. The influence of the Western Carolina University student body on the County's population is indicated by 12.9% of the population being in the 20 to 24 years age group and 17.8% being in the 15 – 24 years age group. Almost 22% of the County's population is age 60 years or older and almost 13% are age 50 to 59 years. Overall the County's population is well balanced from an age perspective, with the significant number of persons in the 20 – 34 age group (24%) providing a potential work force for new and expanding businesses and industries.

Information regarding the educational attainment of county residents is provided in Table 9. With 27% of the population having a bachelor's degree or more education, Jackson County residents have a higher level of educational achievement than the state average. The high level of education can be attributed to the presence of Southwest Community College and Western Carolina University in the county.

Table 10 indicates that the income of county residents has and is predicted to continue to increase at a reasonable rate.

Tables 11 and 12 place Jackson County's population growth during the past decade in a regional perspective. The County's rate of growth during the period 2000 – 2010 was faster than any neighboring county and faster than the state as whole. The rapid rate of population growth provides opportunities for businesses and industries, as the new residents can fulfill the need for employees and serve as customers for businesses.

Jackson County 2010 Census Total Population: 40,271

Table 1 Historical Growth 1900 - 2010

Year	Population	Percent Increase
1900	11,853	
1910	12,998	9.66%
1920	13,396	3.06%
1930	17,519	30.78%
1940	19,366	10.54%
1950	19,261	-0.54%
1960	17,780	-7.69%
1970	21,593	21.45%
1980	25,811	19.53%
1990	26,846	4.01%
2000	33,121	23.37%
2010	40,271	21.59%

Table 2 Growth Trend in Jackson County 1900-2010

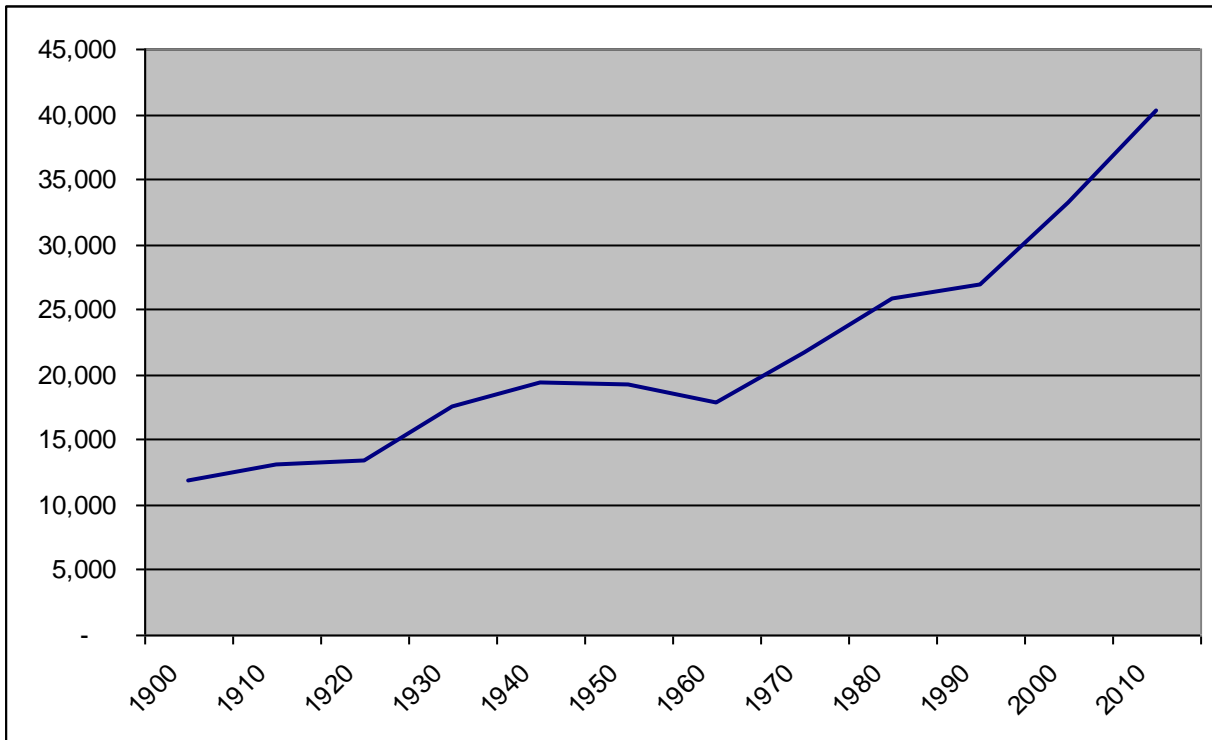
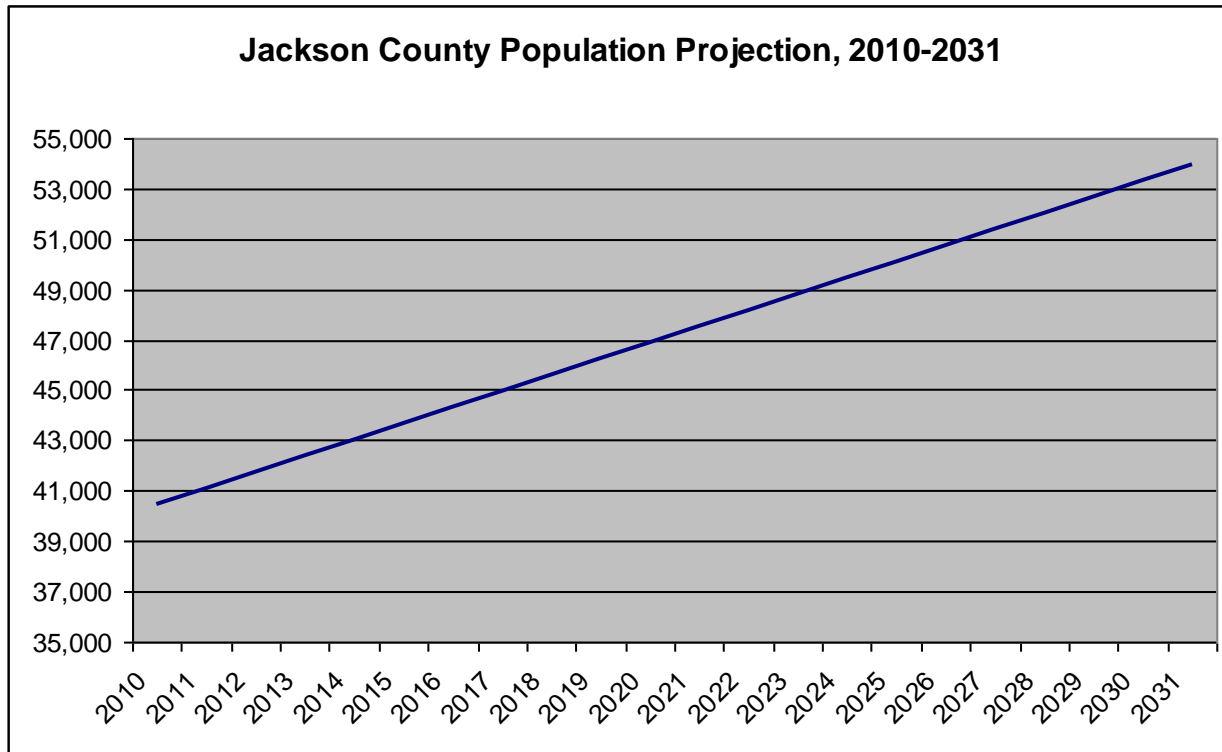


Table 3
OSMB Population Projections for Jackson County, 2010-2031

Year*	Projection
2010	40,480
2011	41,123
2012	41,767
2013	42,408
2014	43,054
2015	43,697
2016	44,340
2017	44,985
2018	45,626
2019	46,271
2020	46,915
2021	47,555
2022	48,200
2023	48,844
2024	49,486
2025	50,129
2026	50,773
2027	51,417
2028	52,061
2029	52,704
2030	53,347
2031	53,991



*Projections calculated to July 1 for each year throughout the projection horizon.

Note: OSMB projections have NOT been recalculated using 2010 Census data.

Source: NC Office of State Management and Budget, "County/State Population Projections," accessed May 26, 2011 at http://www.osbm.state.nc.us/ncosbm/facts_and_figures/socioeconomic_data/population_estimates/county_projections.shtm

**Table 4
Jackson County Race Characteristics 2010**

	Total	Percent
Total	40,271	100.00%
Population of one race	39,489	98.06%
White alone	33,489	83.16%
Black or African American alone	745	1.85%
American Indian and Alaska Native alone	3,804	9.45%
Asian alone	348	0.86%
Native Hawaiian and Other Pacific Islander alone	16	0.04%
Some Other Race alone	1,087	2.70%
Population of two races	746	1.85%
Population of three races	33	0.08%
Population of four races	3	0.01%

**Table 5
Jackson County Hispanic or Latino Population
2010**

	Number	Percent
Total	40,271	100.00%
Hispanic or Latino	2,038	5.06%
Not Hispanic or Latino	38,233	94.94%

**Table 6
Males vs. Females 2010**

	Number	Percent
Males	20,043	49.8%
Females	20,228	50.2%

**Table 7
Jackson County 2010 Population by Age**

	Number	Percent
Under 5 years	2,035	5.1%
5 to 9 years	1,975	4.9%
10 to 14 years	1,951	4.8%
15 to 19 years	3,819	9.5%
20 to 24 years	5,199	12.9%
25 to 29 years	2,574	6.4%
30 to 34 years	2,063	5.1%
35 to 39 years	2,161	5.4%
40 to 44 years	2,164	5.4%
45 to 49 years	2,352	5.8%
50 to 54 years	2,601	6.5%
55 to 59 years	2,580	6.4%
60 to 64 years	2,713	6.7%
65 to 69 years	2,190	5.4%
70 to 74 years	1,484	3.7%
75 to 79 years	1,106	2.7%
80 to 84 years	706	1.8%
85 years and over	598	1.5%

Table 8 Jackson County 2010 Population by Age

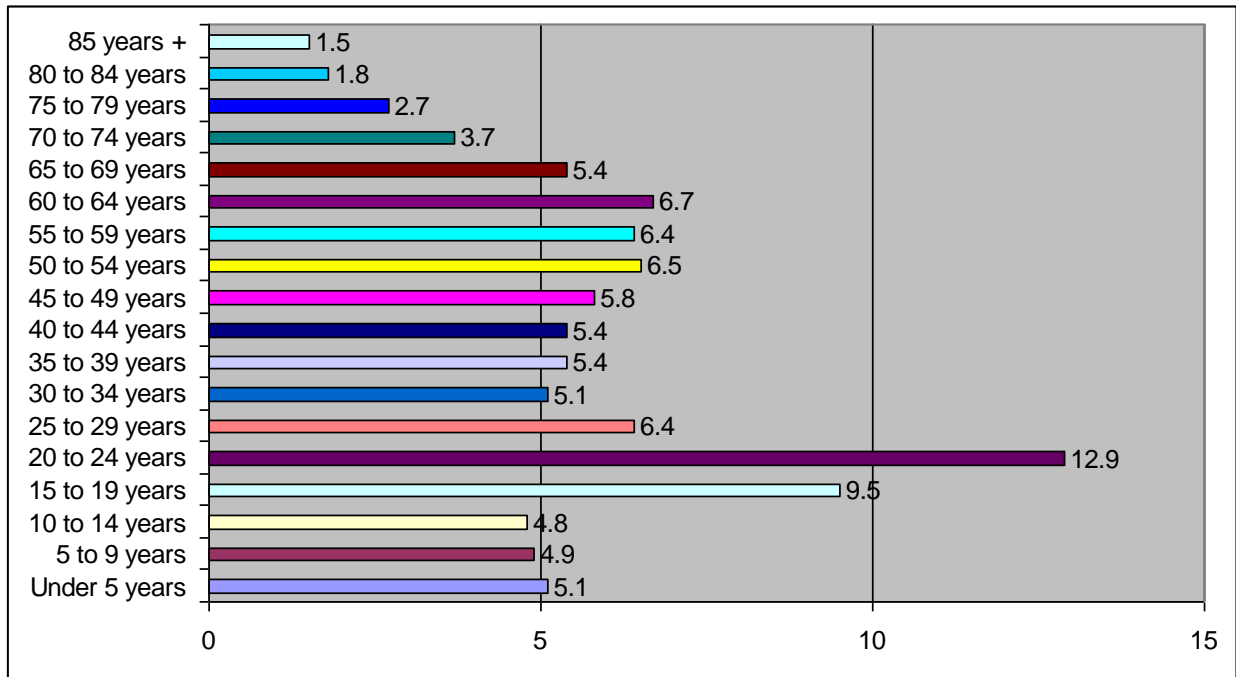


Table 9
Education Pop Age 25+

2011-12 Kindergarten-12th Enrollment	3,745
2012 Average SAT score (2400 scale)	1,494
2012 Percent of Graduates taking SAT	46.4%
2010-11 Higher Education Completions	2,810
2010-11 Higher Education Total Enrollment	14,987
Education Attainment - At Least High School Graduate	20,071 (81.4%)
Education Attainment - At Least Bachelor`s Degree	6,663 (27.0%)

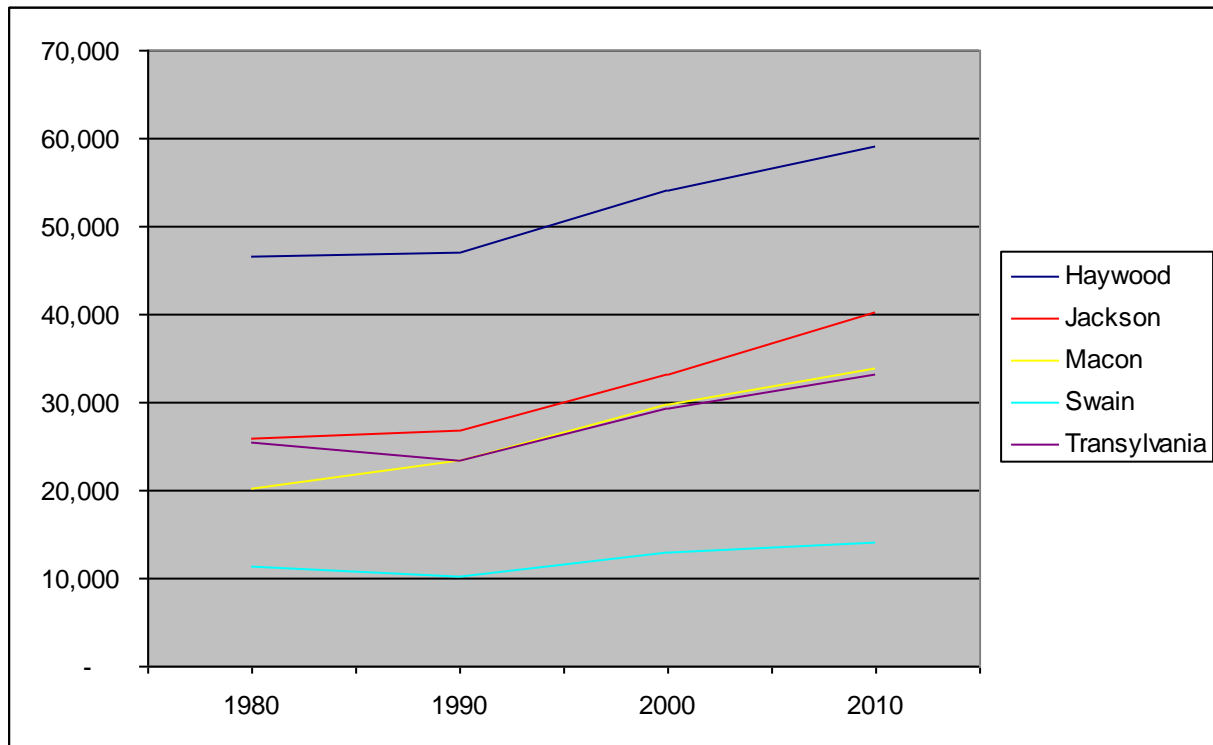
Table 10
Income

2011 Estimated Median Family Income	\$\$49,761
2010 Estimated Median Family Income	\$49,500
2000 Census Median Family Income	\$40,991
2016 Projected Median Household Income	\$41,559
2011 Projected Median Household Income	\$37,593
2000 Census Median Household Income	\$32,699
2010 Estimated Median Worker Earnings	\$18,976
2016 Projected Per Capita Income	\$25,167
2011 Projected Per Capita Income	\$22,689
2000 Census Per Capita Income	\$17,582

Table 11
Jackson County and Surrounding Counties Population
1980 - 2010

	1980	1990	2000	2010	2000-2010 Growth Rate
State of NC	5,881,766	6,628,637	8,049,313	9,535,483	18.46%
Buncombe	160,934	174,821	206,330	238,318	15.50%
Haywood	46,495	46,942	54,033	59,036	9.26%
Jackson	25,811	26,846	33,121	40,271	21.59%
Macon	20,178	23,499	29,811	33,922	13.79%
Swain	11,268	10,283	12,968	13,981	7.81%
Transylvania	25,520	23,417	29,334	33,090	12.80%

Table 12
Growth in Jackson & Adjoining Counties, 1980-2010



Note: Data for State of NC and Buncombe County are omitted from this table.