

Jackson County, North Carolina 2010 Census Data

Prepared by
Jackson County Planning Department
January 9, 2012

The 2010 Census population county for Jackson County of 40,271 residents indicates that the County experienced a significant increase in population during the period from 2000 to 2010. During this decade, the County's population grew 21.6%. The population growth during this period continues a trend that began in 1970, with the County's population increasing 50% in the 20 year period 1990 – 2010 and by 45% during the 20 year period 1960 – 1980 (see Table 1). A slower rate of growth, 4%, was experienced during the decade 1980 – 1990. It is difficult to predict future population growth, but if past trends continue, the County can anticipate continued population growth and an increasing need for the programs, facilities, and services required by a growing population. The straight line population projection in Table 3, prepared by the Office of State Management and Budget, predicts Jackson County's population will be 46,915 in 2020 (15% increase) and 53,347 in 2030 (32% increase). The straight line trend used by the OSMB extends back to 1991, making it a reasonable predictor of future population growth (see Table 4). While these numbers indicate a slower rate of growth during the next 20 years than the County has experienced in the past 20 years, they provide a good foundation upon which to base planning to meet future needs. Given the past population growth and the projections for continued steady population growth, the County can anticipate increased demand for all services. Details of past population growth provided by Census data can assist in identifying where and what type of services will be needed to meet future demands.

In addition to total population numbers, the Census also provides data on the characteristics of the County's population. The race characteristics of the population are provided in Table 5, with data showing that approximately 83% of the County's population is white. Jackson County is home to many members of the Eastern Band of the Cherokee, with approximately 9.5% of the County's residents identified as American Indian by the Census. Approximately 1.9% of the County's population is black and 2.75 of county residents are some other race alone. Persons of Hispanic or Latino ethnicity account for approximately 5% of the County's population (Table 6). The County's population is almost evenly divided between males and females, with 49.8% of residents male and 50.2% female (Table7).

An age breakdown of the County's population is provided in Table 8 and Table 9 provides a graph of the population by age. The influence of the Western Carolina University student body on the County's population is indicated by 12.9% of the population being in the 20 to 24 years age group and 17.8% being in the 15 – 24 years age group. Almost 22% of the County's population is age 60 years or older and almost 13% are age 50 to 59 years. Overall the County's population is well balanced from an age perspective, but the data does provide some direction for planning to meet future opportunities and needs. The significant number of persons aged 15 to 24 years indicates an opportunity to keep this young and educated segment of the population in Jackson County by providing employment opportunities, as well as housing opportunities and related services, for them. Near the other end of the age spectrum, a total of 35% of the population in the retirement and pre-retirement age categories indicates a need to provide services and facilities for older residents. Although retirement plans for many have been delayed by the economic downturn, the County should plan for meeting the needs of current residents as they age and future residents who move to the area for retirement or in preparation for retirement.

Table 10 provides information about where the County's population growth occurred. The Cullowhee township, the location of WCU, experienced the greatest population growth of any area in the County. The township's population increased 47%, with the Cullowhee Township accounting for almost 24% of the County's total population. The location of population growth, and the population age breakdown provided in Table 5, indicates the role of WCU in Jackson County's growth during the past decade. Other townships experiencing a rapid rate of growth are Savannah, Green's Creek, and Barker's Creek. These townships are located in the west central part of the County and all are accessed by a major highway. These three townships and the Cullowhee Township are home to over 35% of the County's population. Given the concentration of population in these townships, the demand for more services in this area can be anticipated.

Tables 12 and 13 provide information that indicates the role of Jackson County as a second home location. The housing unit vacancy rate for Jackson County is approximately 37%. A typical vacancy rate is 8% to 10%, which accounts for homes for sale, vacant rental units, etc. The areas of the County with the highest housing vacancy rate are Census Tract 9509, which roughly the Cashiers Township, and Census Tract 9508, which is the Hamburg Township with a small portion of the River Township. The Census data reflects what has been assumed – that the southern portion of the County has a significant second home population. The large second home population presents unique service provision opportunities, from providing services for a large seasonal population to protecting homes that are occupied seasonally.

Tables 14 and 15 place Jackson County's population growth during the past decade in a regional perspective. The County's rate of growth during the period 2000 – 2010 was faster than any neighboring county and faster than the state as whole. While rightfully serving as a source of pride, we must be mindful of the challenges this presents. Current residents, whether new or long term, will continue to expect a high level of services, from provision of emergency services to good educational facilities to recreation opportunities, and the preservation of those things that make Jackson County unique. As other counties strive to attract new residents, Jackson County must balance the need for employment and housing opportunities with the protection of the natural resources that are our greatest asset.

Jackson County 2010 Census Total Population: 40,271

Table 1 Historical Growth 1900 - 2010

Year	Population	Percent Increase
1900	11,853	
1910	12,998	9.66%
1920	13,396	3.06%
1930	17,519	30.78%
1940	19,366	10.54%
1950	19,261	-0.54%
1960	17,780	-7.69%
1970	21,593	21.45%
1980	25,811	19.53%
1990	26,846	4.01%
2000	33,121	23.37%
2010	40,271	21.59%

Table 2 Growth Trend in Jackson County 1900-2010

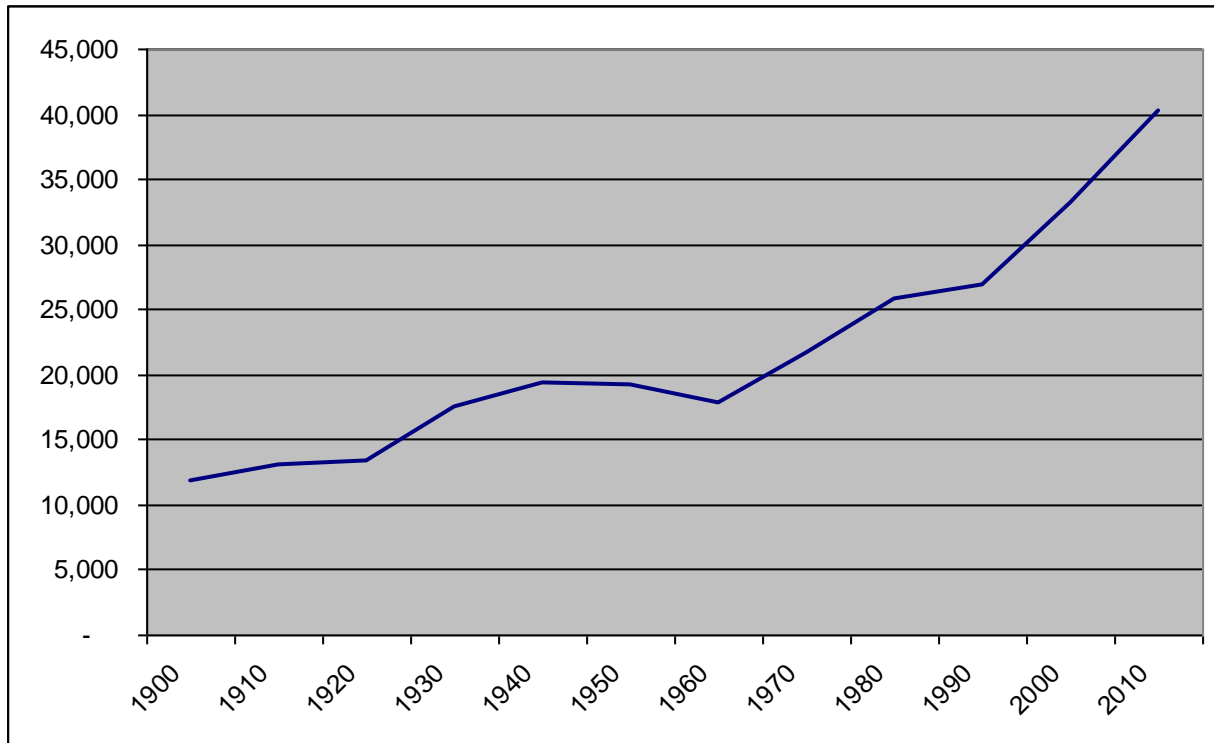
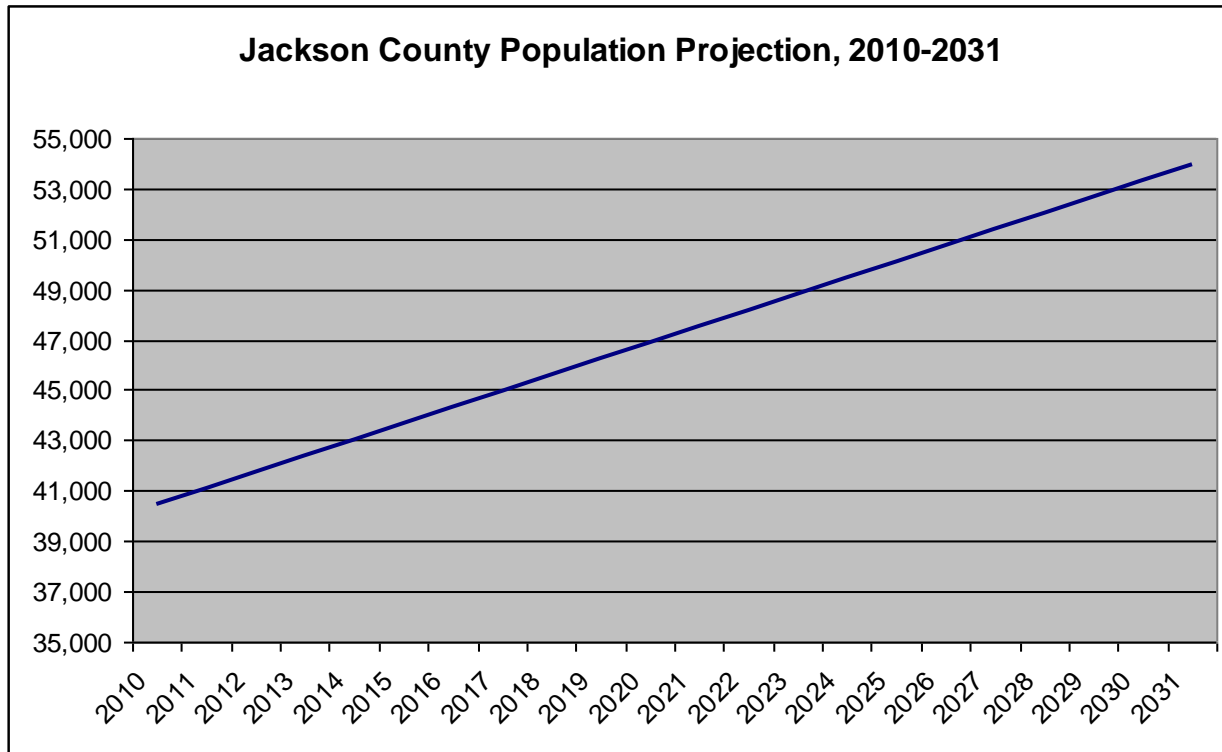


Table 3
OSMB Population Projections for Jackson County, 2010-2031

Year*	Projection
2010	40,480
2011	41,123
2012	41,767
2013	42,408
2014	43,054
2015	43,697
2016	44,340
2017	44,985
2018	45,626
2019	46,271
2020	46,915
2021	47,555
2022	48,200
2023	48,844
2024	49,486
2025	50,129
2026	50,773
2027	51,417
2028	52,061
2029	52,704
2030	53,347
2031	53,991



*Projections calculated to July 1 for each year throughout the projection horizon.

Note: OSMB projections have NOT been recalculated using 2010 Census data.

Source: NC Office of State Management and Budget, "County/State Population Projections," accessed May 26, 2011 at http://www.osbm.state.nc.us/ncosbm/facts_and_figures/socioeconomic_data/population_estimates/county_projections.shtm

Table 4
OSMB Historical Population and Projections for
Jackson County, 1991-2031

Year	Estimate
1991	27,622
1992	28,167
1993	28,615
1994	29,504
1995	30,207
1996	30,843
1997	31,221
1998	31,848
1999	32,492
2000	33,275
2001	33,892
2002	34,570
2003	35,594
2004	36,382
2005	36,751
2006	37,849
2007	38,181
2008	38,659
2009	39,483

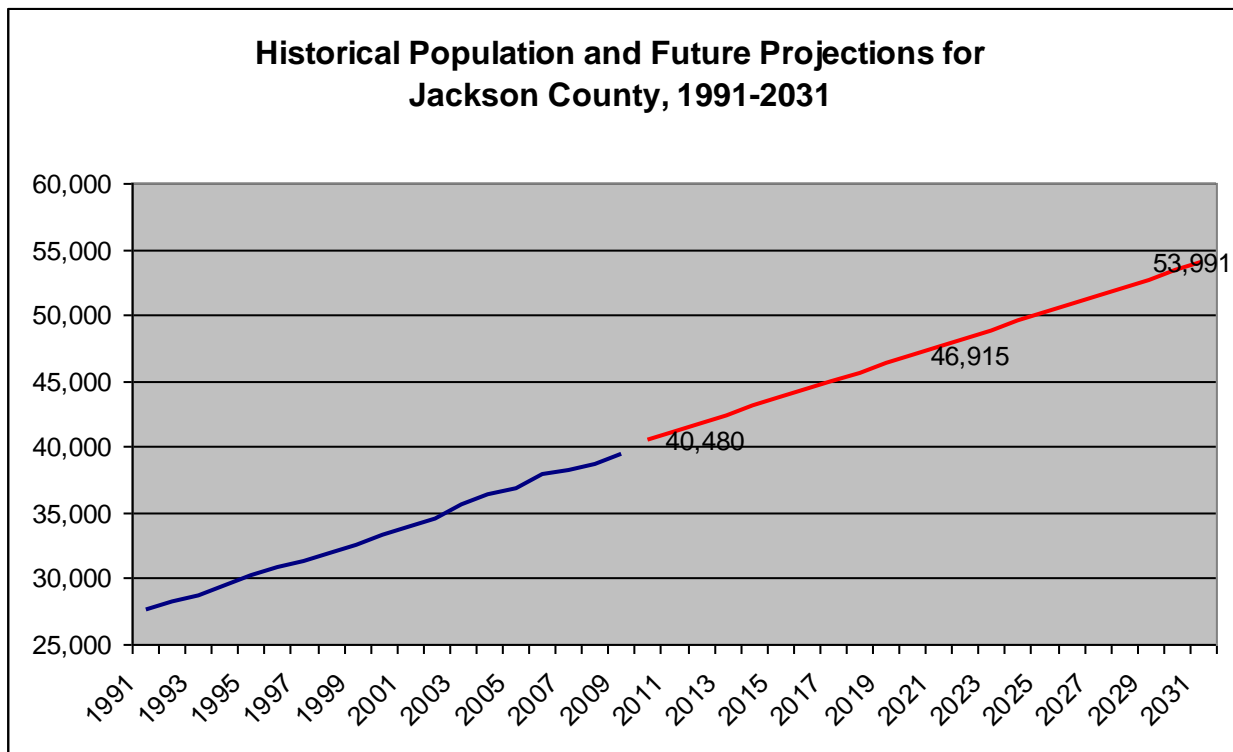
Year	Projection
2010	40,480
2011	41,123
2012	41,767
2013	42,408
2014	43,054
2015	43,697
2016	44,340
2017	44,985
2018	45,626
2019	46,271
2020	46,915
2021	47,555
2022	48,200
2023	48,844
2024	49,486
2025	50,129
2026	50,773
2027	51,417
2028	52,061
2029	52,704
2030	53,347
2031	53,991

Sources

Estimate data: NC Office of State Management and Budget, County Estimates, accessed May 26, 2011 at http://www.osbm.state.nc.us/ncosbm/facts_and_figures/socioeconomic_data/population_estimates/county_estimates.shtm

Projection data: NC Office of State Management and Budget, "County/State Population Projections," accessed May 26, 2011 at http://www.osbm.state.nc.us/ncosbm/facts_and_figures/socioeconomic_data/population_estimates/county_projections.shtm

Note: OSMB projections have NOT been recalculated using 2010 Census data.



**Table 5
Jackson County Race Characteristics 2010**

	Total	Percent
Total	40,271	100.00%
Population of one race	39,489	98.06%
White alone	33,489	83.16%
Black or African American alone	745	1.85%
American Indian and Alaska Native alone	3,804	9.45%
Asian alone	348	0.86%
Native Hawaiian and Other Pacific Islander alone	16	0.04%
Some Other Race alone	1,087	2.70%
Population of two races	746	1.85%
Population of three races	33	0.08%
Population of four races	3	0.01%

**Table 6
Jackson County Hispanic or Latino Population
2010**

	Number	Percent
Total	40,271	100.00%
Hispanic or Latino	2,038	5.06%
Not Hispanic or Latino	38,233	94.94%

**Table 7
Males vs. Females 2010**

	Number	Percent
Males	20,043	49.8%
Females	20,228	50.2%

**Table 8
Jackson County 2010 Population by Age**

	Number	Percent
Under 5 years	2,035	5.1%
5 to 9 years	1,975	4.9%
10 to 14 years	1,951	4.8%
15 to 19 years	3,819	9.5%
20 to 24 years	5,199	12.9%
25 to 29 years	2,574	6.4%
30 to 34 years	2,063	5.1%
35 to 39 years	2,161	5.4%
40 to 44 years	2,164	5.4%
45 to 49 years	2,352	5.8%
50 to 54 years	2,601	6.5%
55 to 59 years	2,580	6.4%
60 to 64 years	2,713	6.7%
65 to 69 years	2,190	5.4%
70 to 74 years	1,484	3.7%
75 to 79 years	1,106	2.7%
80 to 84 years	706	1.8%
85 years and over	598	1.5%

Table 9 Jackson County 2010 Population by Age

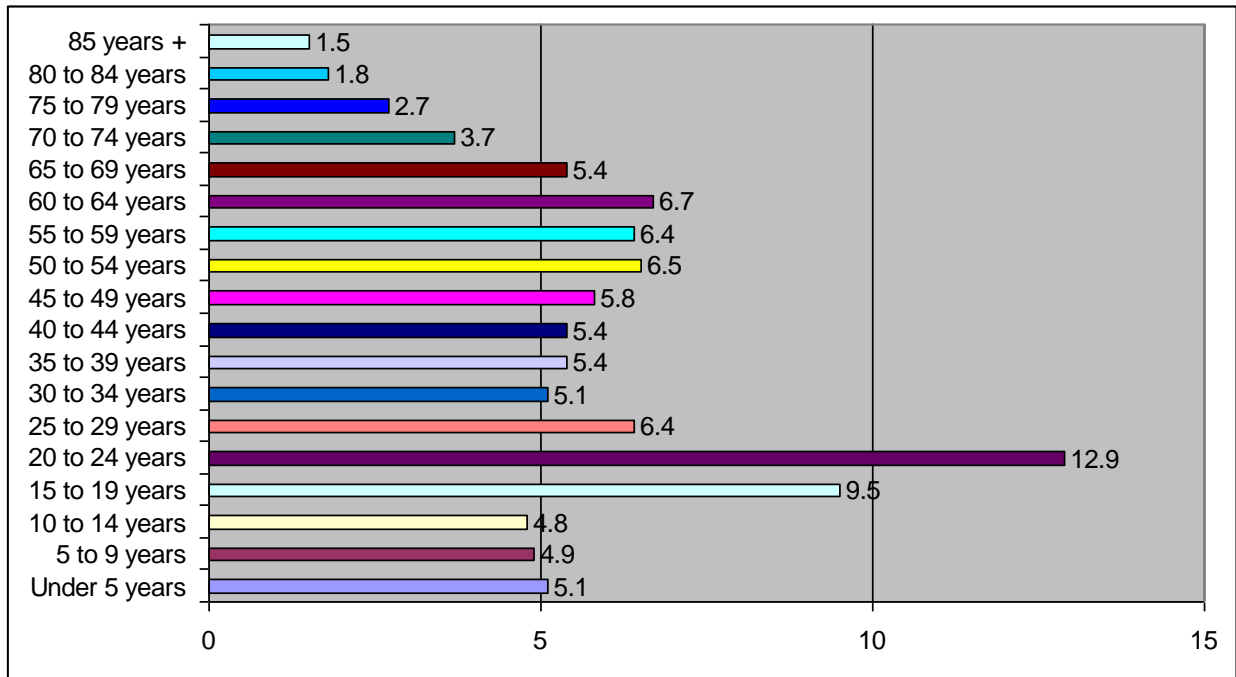


Table 10: Jackson County Population Change 2000 – 2010 by Township

<i>Geographic Area</i>	<i>Population 2010</i>	<i>Percent of Total</i>	<i>Population 2000</i>	<i>% Change 2000 -2010</i>
Jackson County	40271	100	33,121	21.6
Barkers Creek township	1839	4.6	1,465	25.5
Canada township	640	1.6	533	20.1
Caney Fork township	738	1.8	667	10.6
Cashiers township	1974	4.9	1,758	12.3
Cullowhee township	9428	23.4	6,412	47
Dillsboro township	1527	3.8	1,331	14.7
Greens Creek township	1429	3.6	1,000	42.9
Hamburg township	1738	4.3	1,455	19.5
Mountain township	492	1.2	450	9.3
Qualla township	6161	15.3	5,295	16.4
River township	1359	3.4	1,257	8.1
Savannah township	1495	3.7	1,028	45.4
Scott Creek township	2094	5.2	1,929	8.6
Sylva township	6671	16.6	6,099	9.4
Webster township	2686	6.7	2,442	10
Dillsboro town	232	0.6	215	7.9
Forest Hills village	365	0.9	317	15.1
Highlands town	4	0.01	N/A	N/A
Sylva town	2588	6.4	2,462	5.1
Webster town	363	0.9	453	-25.3

Table 11
Jackson County 2010 Population by Census Tract

Jackson County	40,271	100.00%
Census Tract 9402	5,910	14.68%
Census Tract 9502	1,756	4.36%
Census Tract 9503	5,241	13.01%
Census Tract 9504	4,224	10.49%
Census Tract 9505	5,488	13.63%
Census Tract 9506	10,568	26.24%
Census Tract 9507	2,835	7.04%
Census Tract 9508	1,979	4.91%
Census Tract 9509	2,270	5.64%

Table 12
Jackson County Housing Units by Census Tract

Total	25,948	100.00%
Occupied	16,446	63.38%
Vacant	9,502	36.62%

Table 13: Housing Occupancy and Vacancy Rates by Census Tract

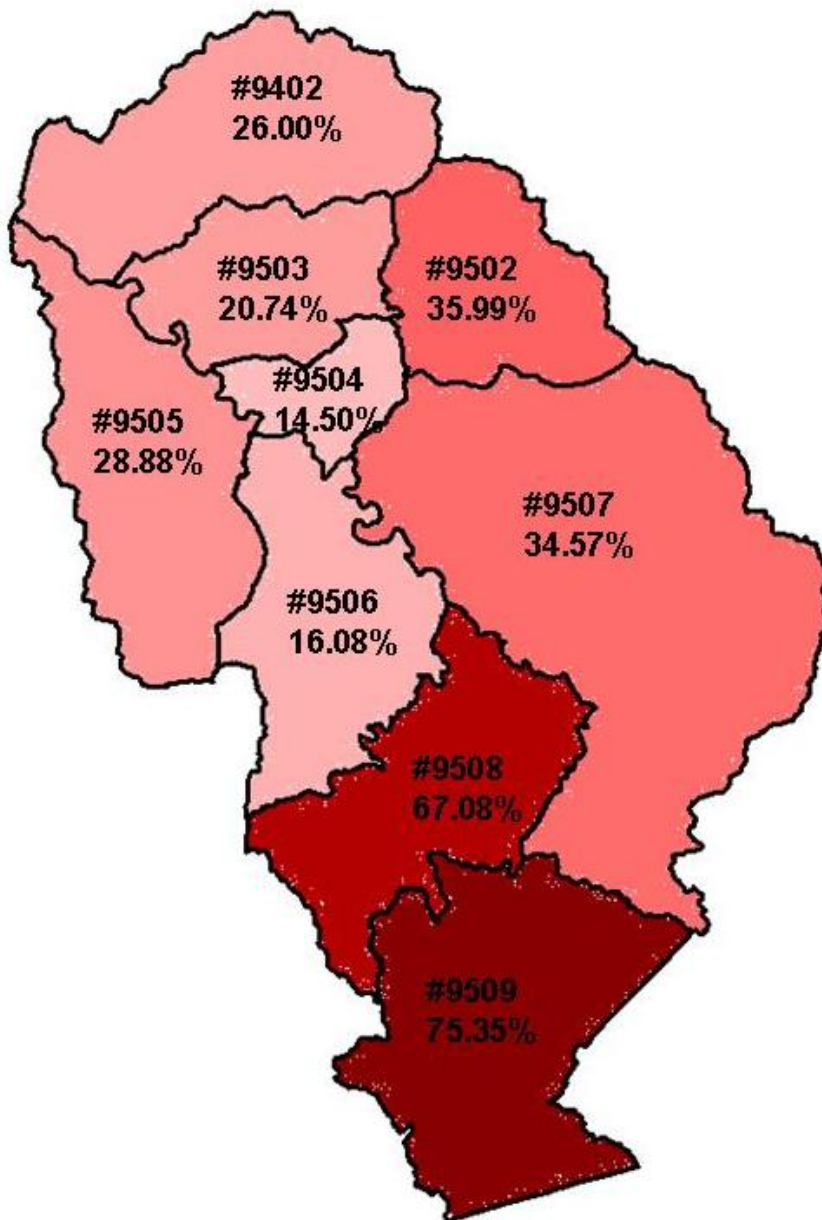
Geographic area	Housing units Total	Housing units Occupied	Occupancy Rate	Housing units Vacant	Vacancy Rate
Jackson County	25,948	16,446	63.38%	9,502	36.62%
Census Tract 9402	3,119	2,308	74.00%	811	26.00%
Census Tract 9502	1,231	788	64.01%	443	35.99%
Census Tract 9503	2,826	2,240	79.26%	586	20.74%
Census Tract 9504	2,296	1,963	85.50%	333	14.50%
Census Tract 9505	3,317	2,359	71.12%	958	28.88%
Census Tract 9506	4,278	3,590	83.92%	688	16.08%
Census Tract 9507	1,935	1,266	65.43%	669	34.57%
Census Tract 9508	2,658	875	32.92%	1,783	67.08%
Census Tract 9509	4,288	1,057	24.65%	3,231	75.35%

Occupied Housing Units. A housing unit is occupied if a person or group of persons is living in it at the time of the interview or if the occupants are only temporarily absent, as for example, on vacation. The persons living in the unit must consider it their usual place of residence or have no usual place of residence elsewhere. The count of occupied housing units is the same as the count of households.

Vacant Housing Units. A housing unit is vacant if no one is living in it at the time of the interview, unless its occupants are only temporarily absent. In addition, a vacant unit may be one which is entirely occupied by persons who have a usual residence elsewhere. New units not yet occupied are classified as vacant housing units if construction has reached a point where all exterior windows and doors are installed and final usable floors are in place. Vacant units are excluded if they are exposed to the elements, that is, if the roof, walls, windows, or doors no longer protect the interior from the elements, or if there is positive evidence (such as a sign on the house or block) that the unit is to be demolished or is condemned. Also excluded are quarters being used entirely for nonresidential purposes, such as a store or an office, or quarters used for the storage of business supplies or inventory, machinery, or agricultural products. Vacant sleeping rooms in lodging houses, transient accommodations, barracks, and other quarters not defined as housing units are not included in the statistics in this report.

Source: <http://www.census.gov/hhes/www/housing/hvs/qtr210/q210def.html>

Housing Vacancy Rates by Census Tract, 2010

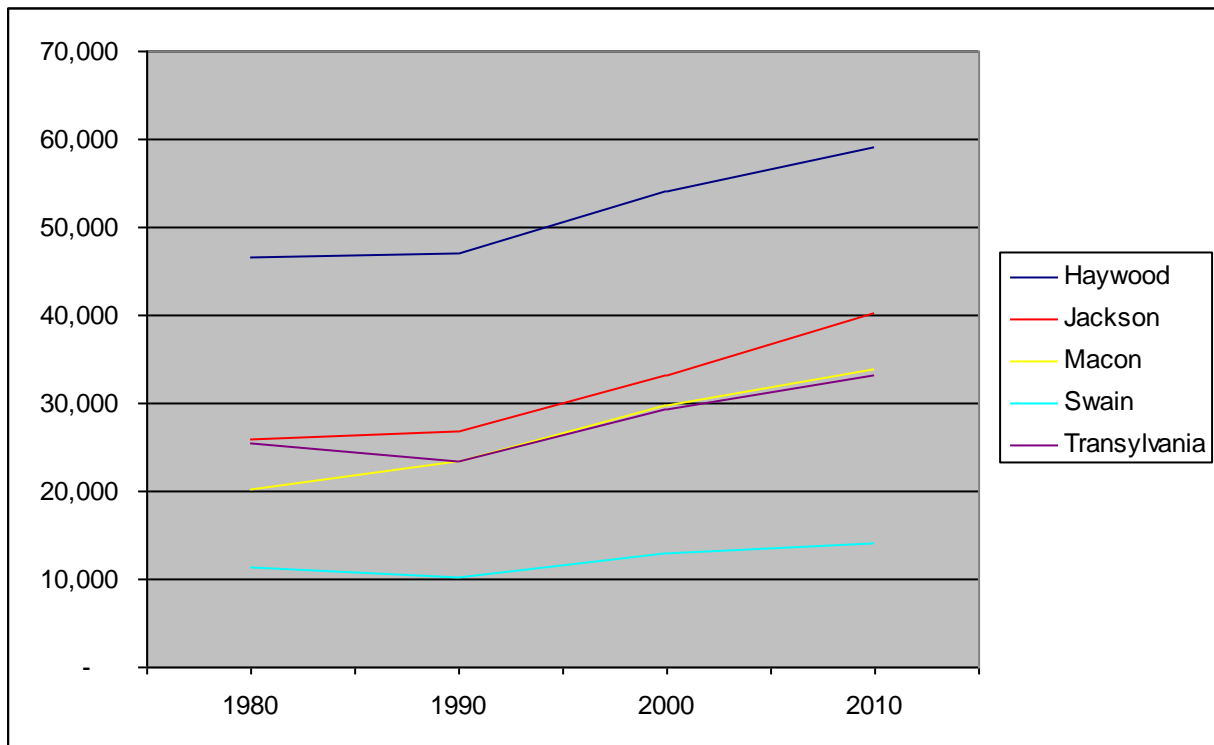


County Vacancy Rate: 36.62%

Table 14
Jackson County and Surrounding Counties Population
1980 - 2010

	1980	1990	2000	2010	2000-2010 Growth Rate
State of NC	5,881,766	6,628,637	8,049,313	9,535,483	18.46%
Buncombe	160,934	174,821	206,330	238,318	15.50%
Haywood	46,495	46,942	54,033	59,036	9.26%
Jackson	25,811	26,846	33,121	40,271	21.59%
Macon	20,178	23,499	29,811	33,922	13.79%
Swain	11,268	10,283	12,968	13,981	7.81%
Transylvania	25,520	23,417	29,334	33,090	12.80%

Table 15
Growth in Jackson & Adjoining Counties, 1980-2010



Note: Data for State of NC and Buncombe County are omitted from this table.