

# Jackson County OEM

---

## SMART FIRE SAFETY TRAINING TRAILER

### 27' Pricing Proposal

March 12, 2019

---



Quote Number: 337  
Date: 3-12-19  
Sales Person: Andrew Gawinski  
Valid Until: 4-12-19  
Terms: Net 30. All prices USD  
General LION Terms of Sales Apply.

Ship To: Michael Forbis  
Address:  
1620 US 441 S  
Sylva, NC 28779  
Email: [michaelforbis@jacksonnc.org](mailto:michaelforbis@jacksonnc.org)





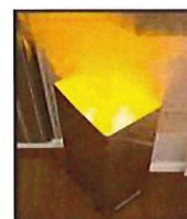
---

**Emergency Response Training Environment (ERTE 027)****Smart Fire Safety and Emergency Training Trailer****Price: \$109,380**

The Smart Fire Safety and Emergency 27 foot Training Trailer allows you to create numerous hands-on emergency response scenarios with dozens of additional hazard recognition training opportunities. The mobile training environment features three interior rooms, including an Interactive Kitchen Emergency Training Room, Interactive Industrial Training Room and a briefing room.

**Interactive Kitchen Emergency Training Room Features:**

- Fully Interactive Stove with Oven and StoveTop Fire Training Scenario. Features Integrated Digital Flame, Smoke, and Sound Effects. Fire starts and grows dynamically and responds in real time to the actions of the training extinguisher and response of the trainee.
- Fully Interactive TrashCan Fire Prop with Integrated Digital Flames, Smoke, and Sound Effects. Fires can spread from the Stove to the TrashCan if left unchecked. Fires respond dynamically to the actions of the training extinguisher and response of the trainee.
- 5lb Rechargeable Laser Driven Training Fire Extinguisher, with on-board sound effects and rechargeable batteries, that interacts in real time with the Burning CookTop SmartProp
- Central automated network control switch that allows fire to grow dynamically and spread to other linked SmartProps for realistic fire expansion scenarios
- Interactive Smoke Detector Response Scenario Prop, responds automatically to the cook top fire scenario in the room
- Wireless handheld remote for initiating or stopping emergency scenarios
- 911 Phone with dial tone, working buttons, and voice message. Phone plays pre-recorded emergency message or a customized message
- Cabinets and Sink Props
- Mock window
- Training-smoke evacuation fan



- Overhead Heaters which create a heat effect during fire scenarios for a more realistic simulation

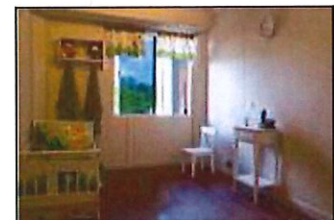


- Door to Briefing Room



#### **Interactive Bedroom Emergency Training Room Features:**

- Heated and Smoking Door Prop, with full door heating effects that vary the core temperature from top to bottom, allowing for interactive hazard recognition and evacuation lessons
- Adjustable temperature control on the door
- Smoking Electrical Outlet, allowing for electrical safety hazard recognition lessons
- Smoke Detector with alarm (switch operated)
- Towel rack and towel for smoking door scenario interactions
- Sliding Window with Exterior Mounted Escape Ladder for EDITH drills
- Chair, Bed and Lamp Props
- Door to Briefing Room



**Trailer will include an extra interior and exterior power outlet.**





The trailer described in this proposal will be designed to provide safe and effective fire prevention and emergency training.

### **Physical Specifications**

#### **Dimensions**

Length: 27' overall body length plus tongue

Width: 8' 6" approximate

Exterior height: 11' approximate

#### **Construction**

##### **Exterior Finish**

0.050 white heavy duty aluminum with rivets

10 year construction warranty on frame

##### **Wiring**

14ga primary wiring (12V)

14ga THHN (15A 120V circuits) / 12ga THHN (20A 120V circuits)

Electrical trailer receptacle: NEMA Style. 120/240 VAC.

##### **Other**

Built in welded corner posts

Stabilizing jacks on all four corners

Tongue: A-frame hitch with 2 5/16" coupler and safety chains

Axles & Brakes: Two 6,000 lb. electric brake torsion axles, brakes on all wheels

Trailer Weight: 9,000lbs. / GVWR: 13,200 lbs.

Average and maximum tongue weight: 1,000lbs. (2,000lb. max)

Doors: 36" x 80" hinged entrance doors for each training room

Pull-out step

Wood grain flooring throughout

Ventilation: Power exhaust fans above each training room with wall mounted switch

12v interior light in electrical compartment

12v interior light in trailer when plugged into vehicle

12v Power cut off switch

Foldable grab handles on exterior door

##### **Includes Complete Generator Power Package:**

- 10 KW Portable Wheeled Generator. Power all electrical trailer features with this gas fueled generator. Fits within the external generator storage compartment built into the kitchenette room.
- 50 foot power cable with all required plugs and adaptors
- Online UPS system
- Power winch and ramps for loading and unloading the generator from the storage compartment



---

## Additional Smart Accessories

---

Your trailer will include the following:

### Interactive Kitchen Hazard Recognition Package

Package includes:

- Smoking Toaster
- Smoking Outlet
- Chemical Cabinet
- Wall-mounted flat screen TV with DVD player for Safety Videos



### Two Air Conditioning Systems

- Roof-mounted premium air conditioners

### Awning (21 foot)

- Red 21' Awning; mounted on entry side of the trailer

### Full Trailer Insulation

Insulation on floor, walls and ceiling of trailer.

## Wheelchair Ramp and Hardware Storage

- Eight foot Wheelchair ramp and storage for all associated hardware (600lb weight capacity)



## Severe Weather Package

*Requires Kitchen Hazard Recognition Package.*

The LION Extreme Weather Package is a state-of-the-art hazard recognition prop. The package includes a weather alert broadcast over the trailer's TV and radio. The alert is similar to the 'Emergency Broadcast System' alert, informing trainees that a severe weather event is imminent. The broadcast describes the differences between 'storm watch' and 'storm warning' using facts from FEMA to teach trainees life-saving tips and preparation techniques based on the type of extreme weather. The simulation includes digital amplification of various severe weather sound effects and strobe effects simulating lightning and power surges, creating an extremely realistic training environment. Passengers will feel like they're in the eye of the storm as the trailer shakes and the lights flicker.

Life-threatening weather emergencies can occur with little or no notice. The Severe Weather Package, an add-on to the Kitchen Fire Scenario, broadcasts realistic severe weather alerts and teaches trainees how to react if faced with an extreme weather event. Weather simulations incorporate actual news broadcasts with immersive sound effects for hurricane, earthquake, flood, and tornado safety education. The LION Severe Weather Package teaches critical life-saving steps in a highly realistic training environment.



- NOAA Weather Radio warns of severe weather
- Integrated television broadcasts emergency weather news report
- Digital amplification creates realistic weather sound effects
- Strobe effects simulate lightning and intermittent power outages

The Severe Weather Package allows for breaks in the action so the instructor can discuss the emergency procedures specific to their location. The intensity level can be adjusted to provide an experience appropriate to the age level of the participants.





### Package Includes:

Sound system and subwoofer, a strobe light for lightning effects, a weather radio that reports severe weather, flickering overhead lighting, emergency lights and a video that plays on the TV of a tornado, earthquake, flood and hurricane weather emergency together with instructive messaging. Overhead lighting, sound, weather radio, emergency lights, and strobe light are all automatically controlled by the simulation. The package includes the following simulations:

- Hurricane weather emergency simulation
- Tornado weather emergency simulation
- Flood emergency simulation
- Earthquake emergency simulation

### Over Stove Cabinet Fire

- Features Integrated Digital Flame, Sound, and Heat Effects. Fire can grow and spread to cabinets above the stove if fire is left unchecked or is not properly extinguished. Cabinet Fire dynamically responds to the actions of the training extinguisher and response of the trainee.



### Microwave Prop – if Cabinet or Trash Can is installed

- Sparking and burning counter mounted microwave, with functioning power plug to disconnect the unit and shutdown the C-class fire scenario

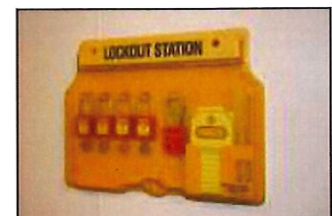


### Interactive Industrial Briefing Room

Scenario-based built-in sound, smoke, and light effects to create realistic electrical emergency response drills.

Package Includes:

- Fully interactive Sparking Electrical Cabinet Panel Prop with cutoff switch



- Interactive functional Alarm Pull Station
- Automated alarm strobe
- Lock Out Tag Out station
- All features controlled via wireless hand held remote
- Exterior door with steps; doors to both Kitchen and Bedroom



### Camera and Wireless Video Display Package

Package Includes:

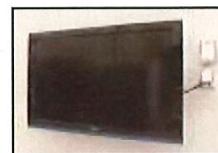
- Four (4) wall mounted digital color video cameras
- iPad with pre-installed networked software for video display



### Exterior Television Package

Package includes:

- 40" or greater flat screen TV
- Mounting brackets
- Waterproof exterior power and cable outlets
- Internal storage and transport location for TV



### Trailer Mounted Spare Tire







---

### **Electric Stabilizing Jacks**

Mounted on the four corners of the trailer. 12V battery mounted on board with controls found in the generator compartment.

### **Shipping and on-site training**

- |  |                       |
|--|-----------------------|
| ➤ Delivery to site   | <b>Price: \$2,433</b> |
| ➤ Four hour train the trainer session with a LION representative | <b>Price: \$1,708</b> |

## Pricing Proposal

### BUDGETARY PROPOSAL For Jackson County OEM

27 foot Smart Fire Safety Training Trailer with: **\$146,282**

Interactive Kitchen Hazard Recognition Package  
Two Air Conditioning Systems  
Awning (21 foot)  
Full Trailer Insulation  
Wheelchair Ramp and Hardware Storage  
Severe Weather Package  
Microwave Prop  
Cabinet Fire Prop  
External TV and Camera Package  
Interactive Industrial Hazard Recognition Package  
One Extra Interior Power Outlet and One Exterior Outlet  
Aluminum Wheels and Spare Tire

Shipping\* **\$2,433**

On-site training: **\$1,708**

**Total:** **\$150,423**

### Optional Warranty approximately \$10,240 per year

The optional one year warranty will commence upon the expiration of the one year warranty included in price of trailer. Warranty must be purchased within the included normal one-year warranty time frame.

\*Winter delivery may incur an additional fee

