



A Resolution

of the

Jackson County Board of Commissioners

For Approval of Insurance Service Office (ISO) Public Protection Class (PPC) for Fire Districts and associated Response Districts Map

Upon Motion by Commissioner _____, seconded by Commissioner _____, BE IT RESOLVED that the Board of Commissioners of the County of Jackson approves the boundary lines of the following: Balsam-Willets-Ochre Hill, Sylva, Cashiers-Glenville, Canada, and Qualla Insurance Districts in accordance with the maps and descriptions filed this date with the Board of County Commissioners and recorded in the minutes of the meeting. Said Fire Insurance Districts are described in the attachments hereto.

ADOPTED, this 17th day of July, 2017.

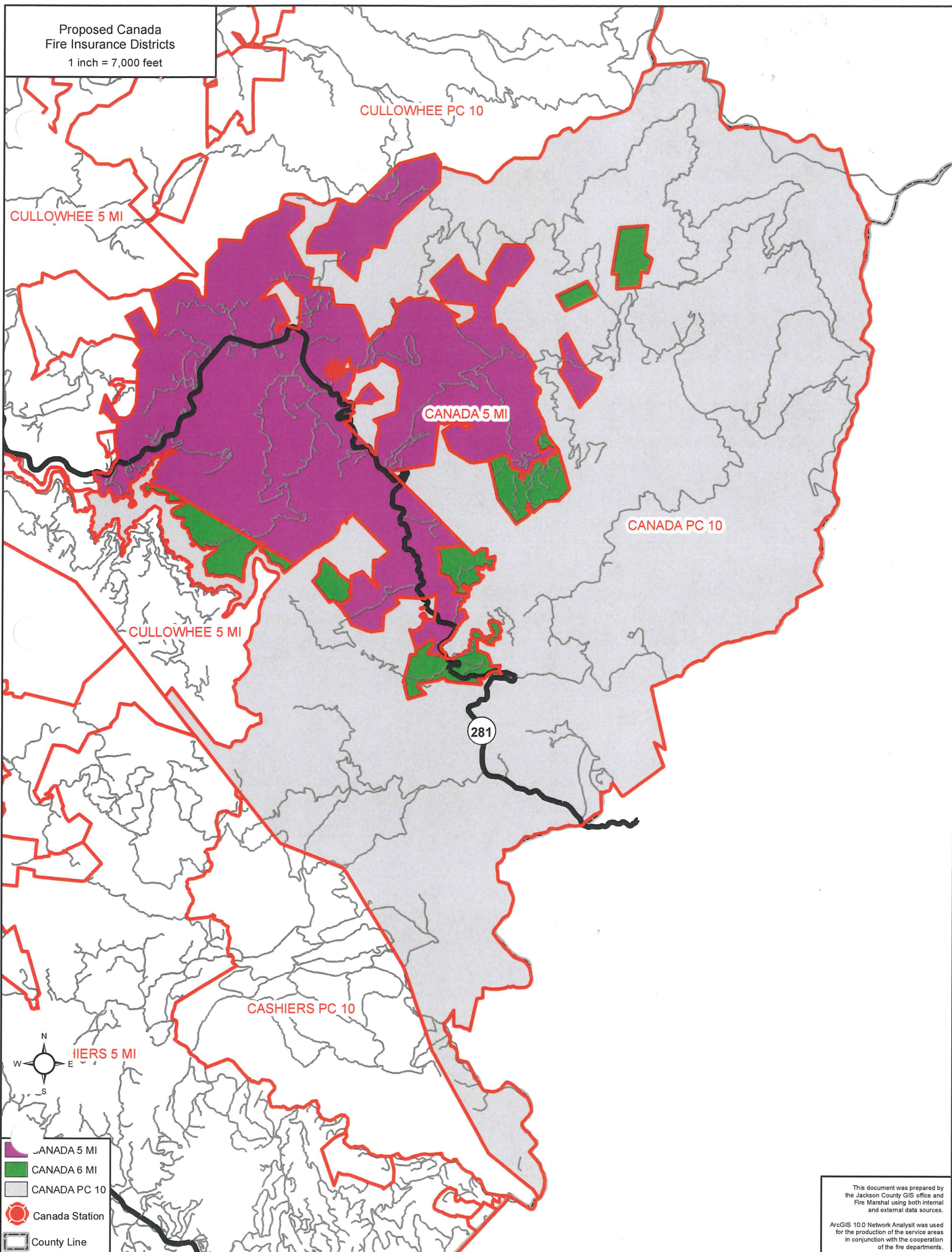
Brian Thomas McMahan, Chairman

NORTH CAROLINA
JACKSON COUNTY

This is to certify that the foregoing is a true and accurate copy of an excerpt from the Minutes of the Board of County Commissioners of Jackson County, adopted on the 17th day of July, 2017.

Angela M. Winchester, Clerk to the Board

Proposed Canada
Fire Insurance Districts
1 inch = 7,000 feet



CULLOWHEE 5 MI

CULLOWHEE PC 10

CANADA 5 MI

CANADA PC 10

CULLOWHEE 5 MI

281

CASHIERS PC 10

CASHIERS 5 MI

- CANADA 5 MI
- CANADA 6 MI
- CANADA PC 10
- Canada Station
- County Line

This document was prepared by the Jackson County GIS office and Fire Marshal using both internal and external data sources. ArcGIS 10.0 Network Analyst was used for the production of the service areas in conjunction with the cooperation of the fire departments.