



## A Resolution

of the

### Jackson County Board of Commissioners

**For Approval of Insurance Service Office (ISO) Public Protection Class (PPC) for Fire Districts and associated Response Districts Map**

Upon Motion by Commissioner \_\_\_\_\_, seconded by Commissioner \_\_\_\_\_, BE IT RESOLVED that the Board of Commissioners of the County of Jackson approves the boundary lines of the following: Cullowhee Substation and Savannah Substation Fire Insurance Districts in accordance with the maps and descriptions filed this date with the Board of County Commissioners and recorded in the minutes of the meeting. Said Fire Insurance Districts are described in the attachments hereto.

**ADOPTED**, this 17<sup>th</sup> day of April, 2017.

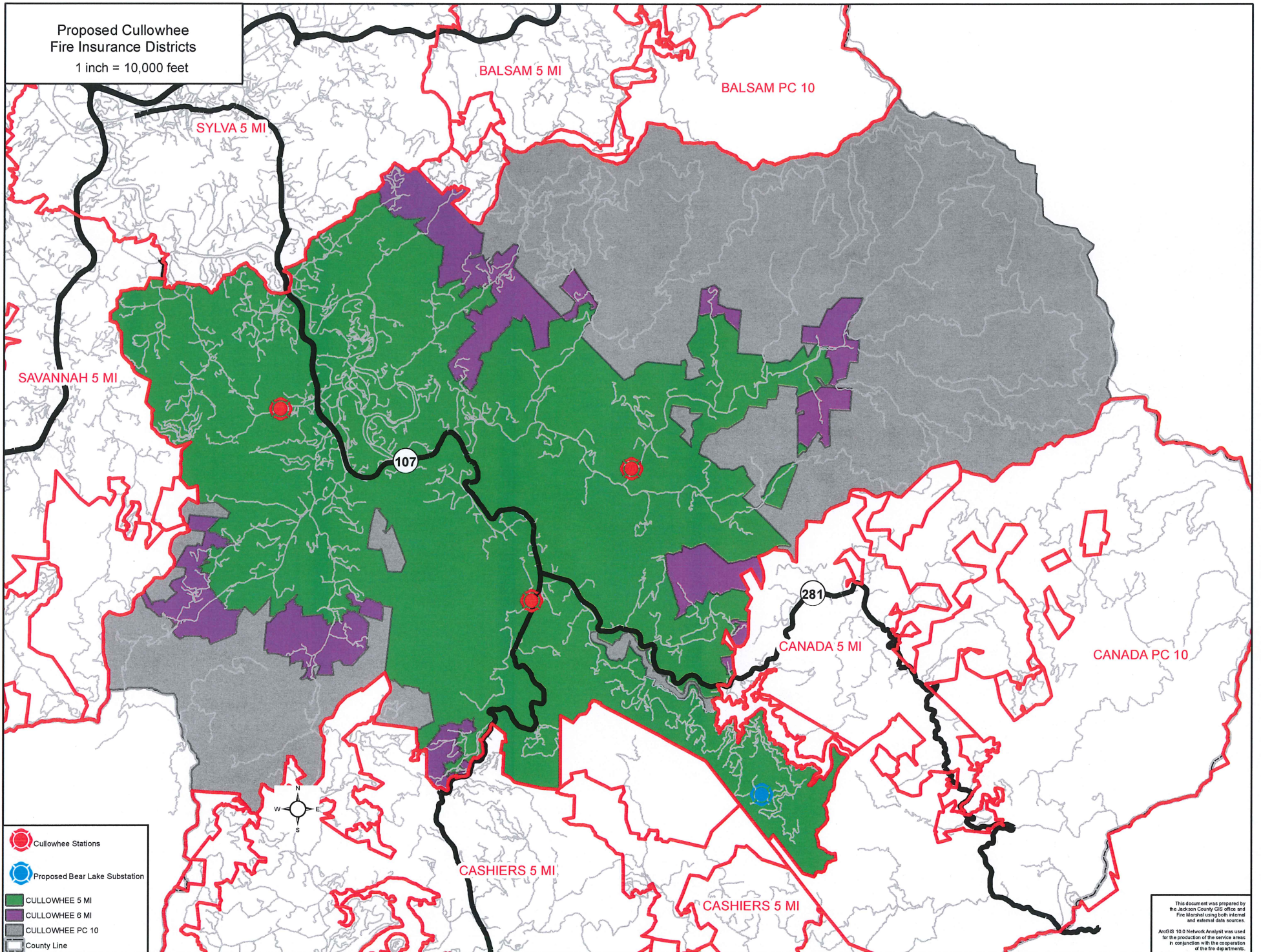
Attest:

By:

\_\_\_\_\_  
Angela M. Winchester, Clerk to Board

\_\_\_\_\_  
Brian Thomas McMahan, Chairman

Proposed Cullowhee Fire Insurance Districts  
1 inch = 10,000 feet

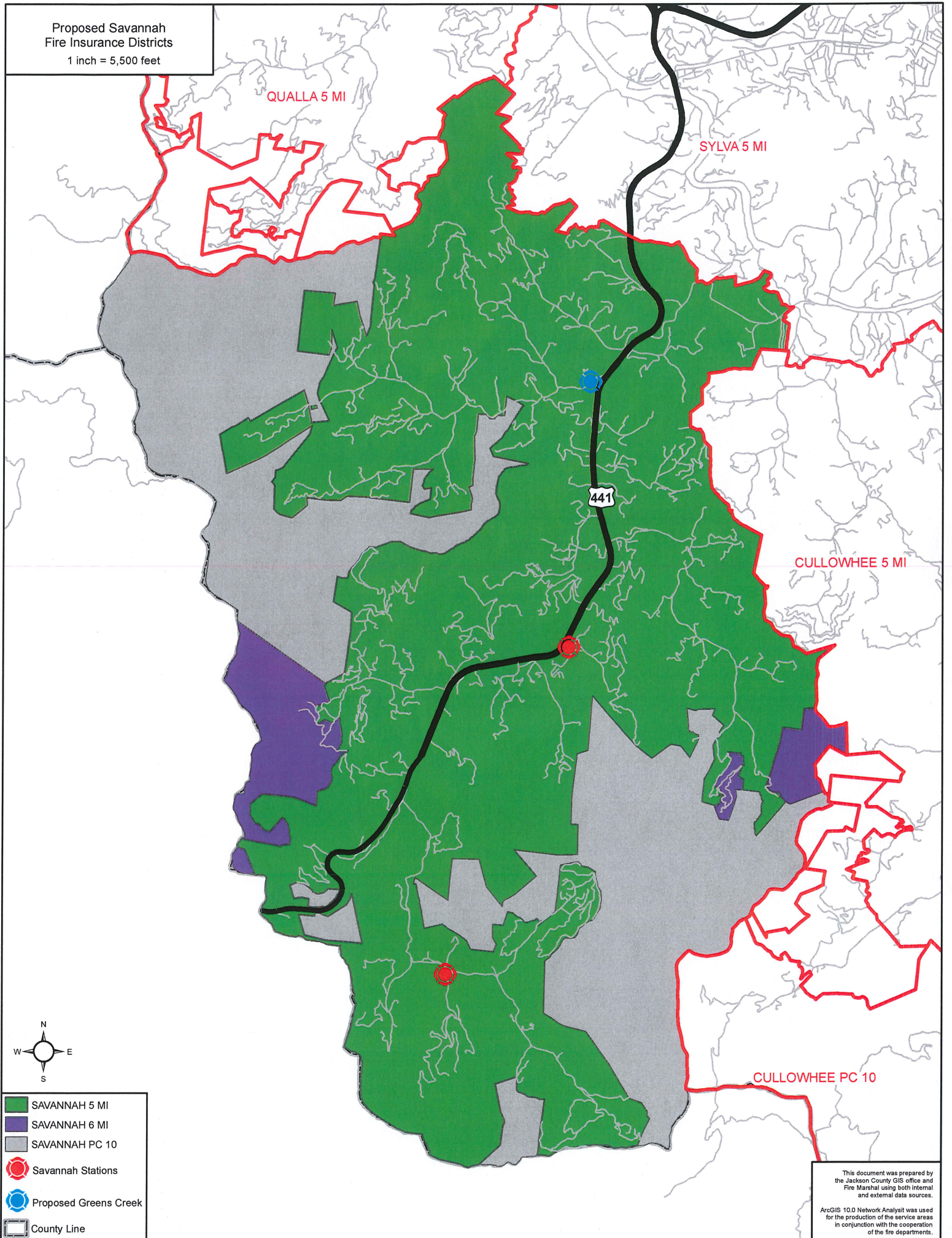


Legend:

- Cullowhee Stations
- Proposed Bear Lake Substation
- CULLOWHEE 5 MI
- CULLOWHEE 6 MI
- CULLOWHEE PC 10
- County Line

This document was prepared by the Jackson County GIS office and Fire Marshal using both internal and external data sources. ArcGIS 10.0 Network Analyst was used for the production of the service areas in conjunction with the cooperation of the fire departments.

Proposed Savannah  
Fire Insurance Districts  
1 inch = 5,500 feet



This document was prepared by the Jackson County GIS office and Fire Marshal using both internal and external data sources. ArcGIS 10.0 Network Analyst was used for the production of the service areas in conjunction with the cooperation of the fire departments.