



# JACKSON COUNTY FAIRVIEW ROAD SIDEWALK FEASIBILITY STUDY

*January 9, 2023 Jackson County Board of Commissioners*



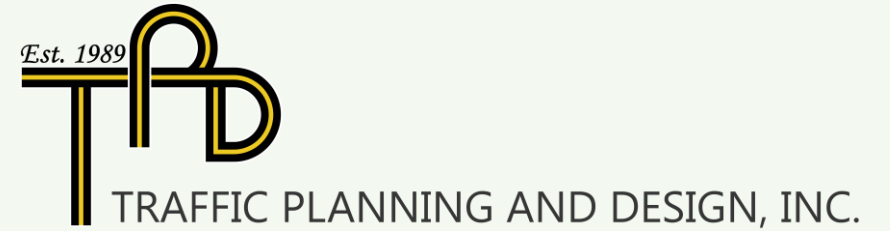


## AGENDA

- Introductions
- Study Purpose + Study Area
- Preliminary Alignments & Conceptual Costs
- Next Steps + Questions

introductions

# TPD PROJECT TEAM



**Christy Staudt, PE**  
*Regional Manager*



**Teresa Buckwalter, PLA**  
*Multimodal Transportation Planner*



**Kristy Carter, AICP**  
*Senior Project Manager*



**Rachael Bronson, AICP**  
*Multimodal Transportation Specialist*



**Kenny Armstrong, AICP**  
*Multimodal Transportation Specialist*



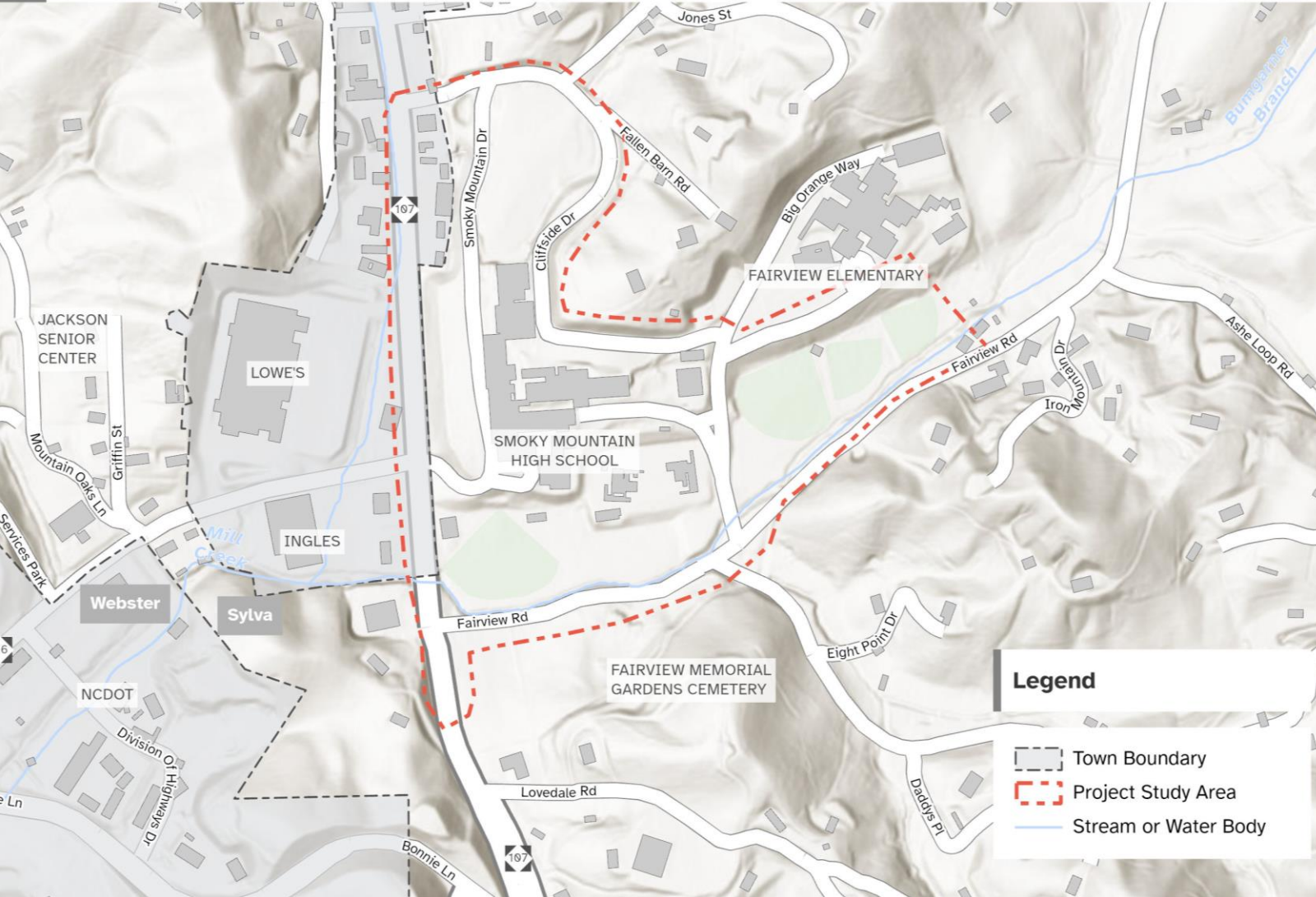
## STUDY PURPOSE + GOALS

Determine the **best alignment** and facility type to provide a pedestrian connection from NC 107 to Fairview School.

- Enhance the mobility and transportation options for the community to access the school and associated recreational amenities.
- Reduce the amount of vehicle traffic on Fairview Road during peak demand time during the school year.

# JACKSON COUNTY FAIRVIEW ROAD SIDEWALK FEASIBILITY STUDY

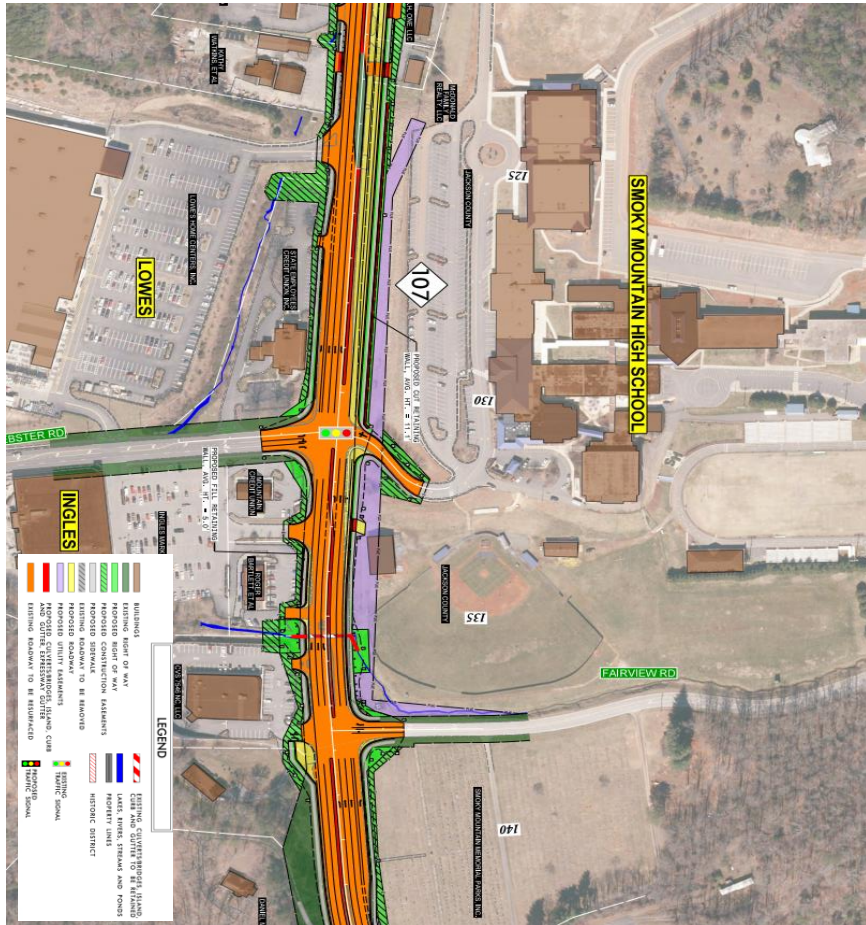
Map:  
Project Study Area



## STUDY AREA

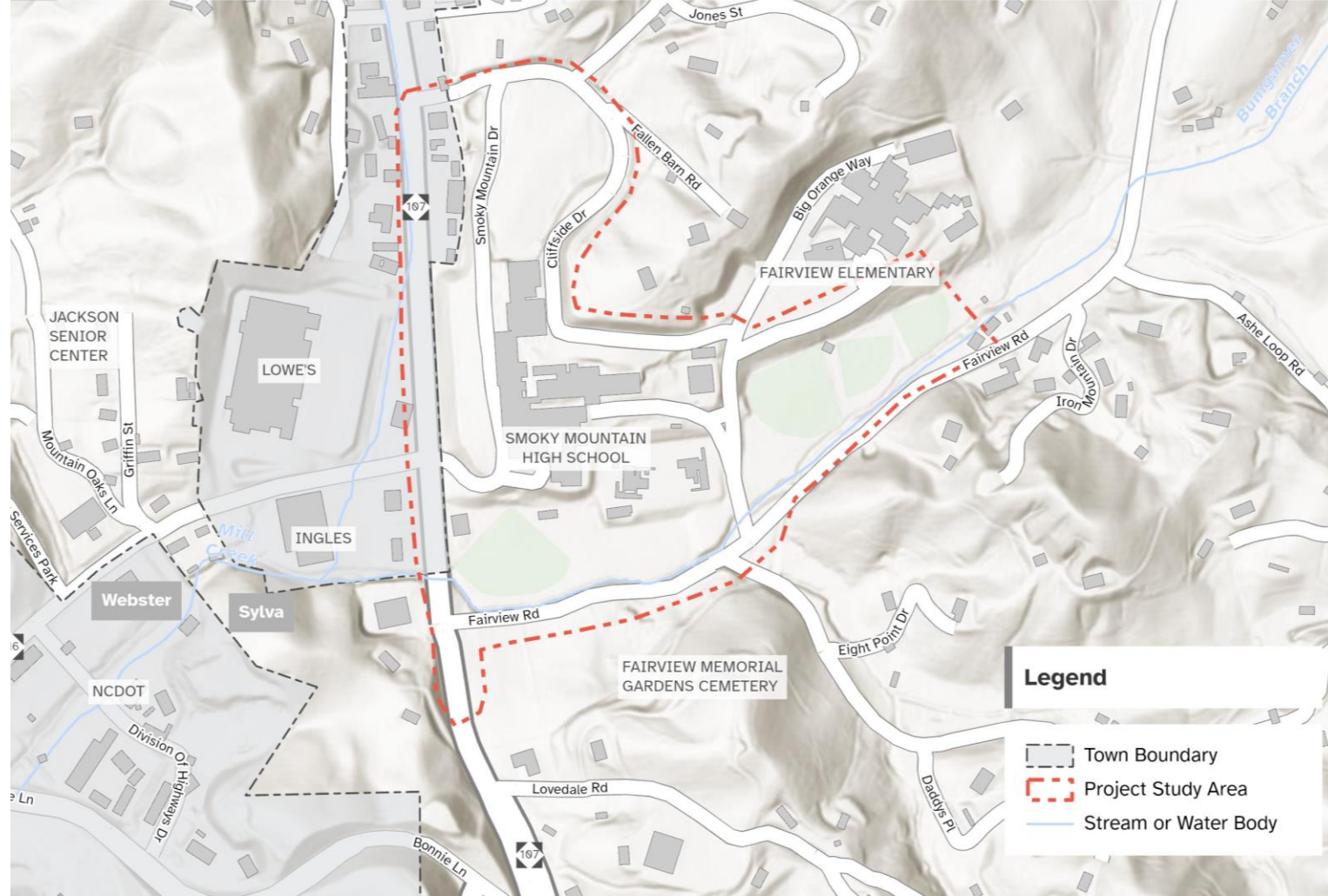
The vicinity of NC Highway 107 and Fairview Road in Jackson County, near Smoky Mountain High School and Fairview Elementary School. The study area also includes Big Orange Way, the driveway from Fairview Road to the school building, and Cliffside Drive/Jones Street.

study considerations  
Highway 107 Project



Map:  
Project Study Area

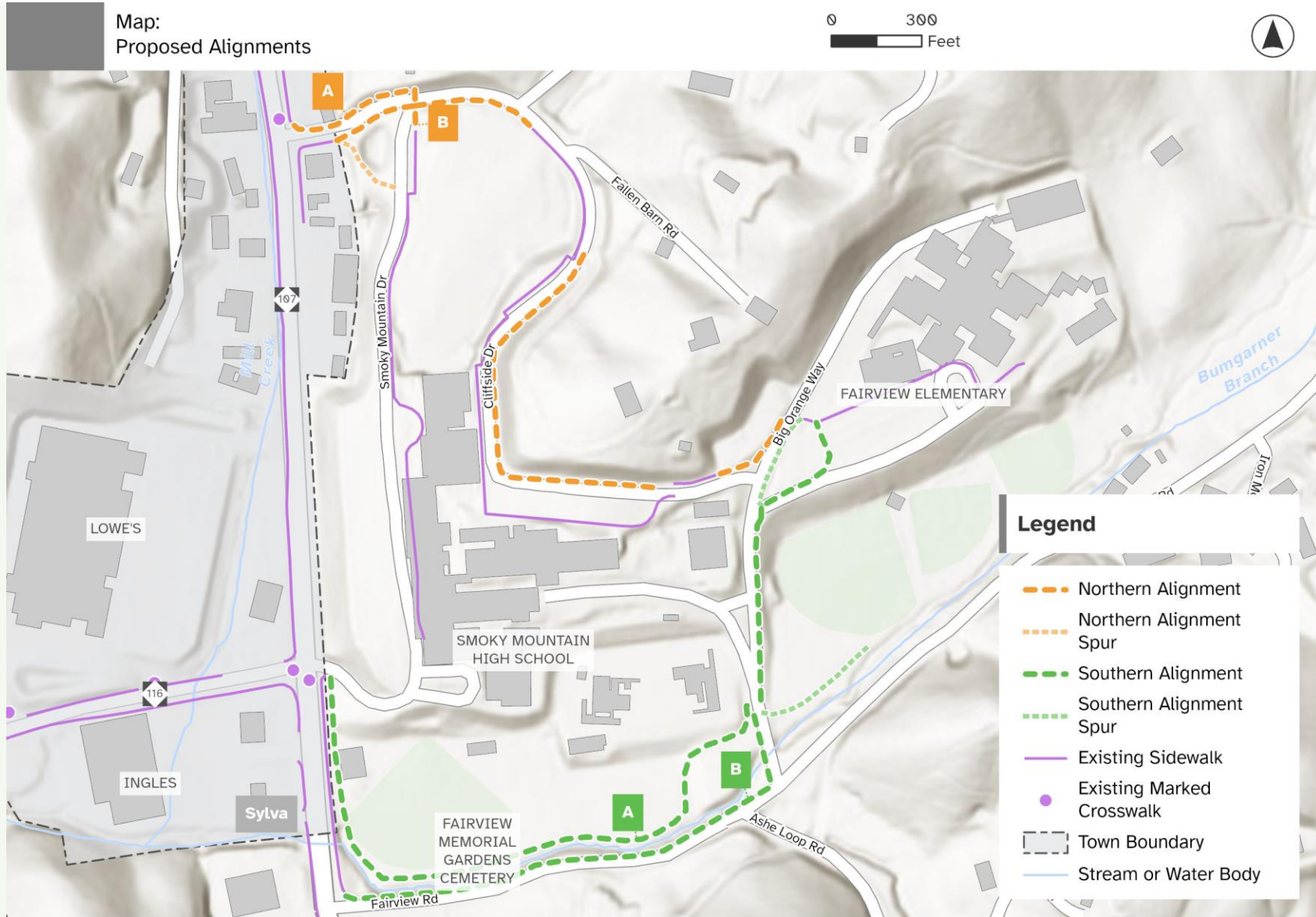
0 0.25 Miles



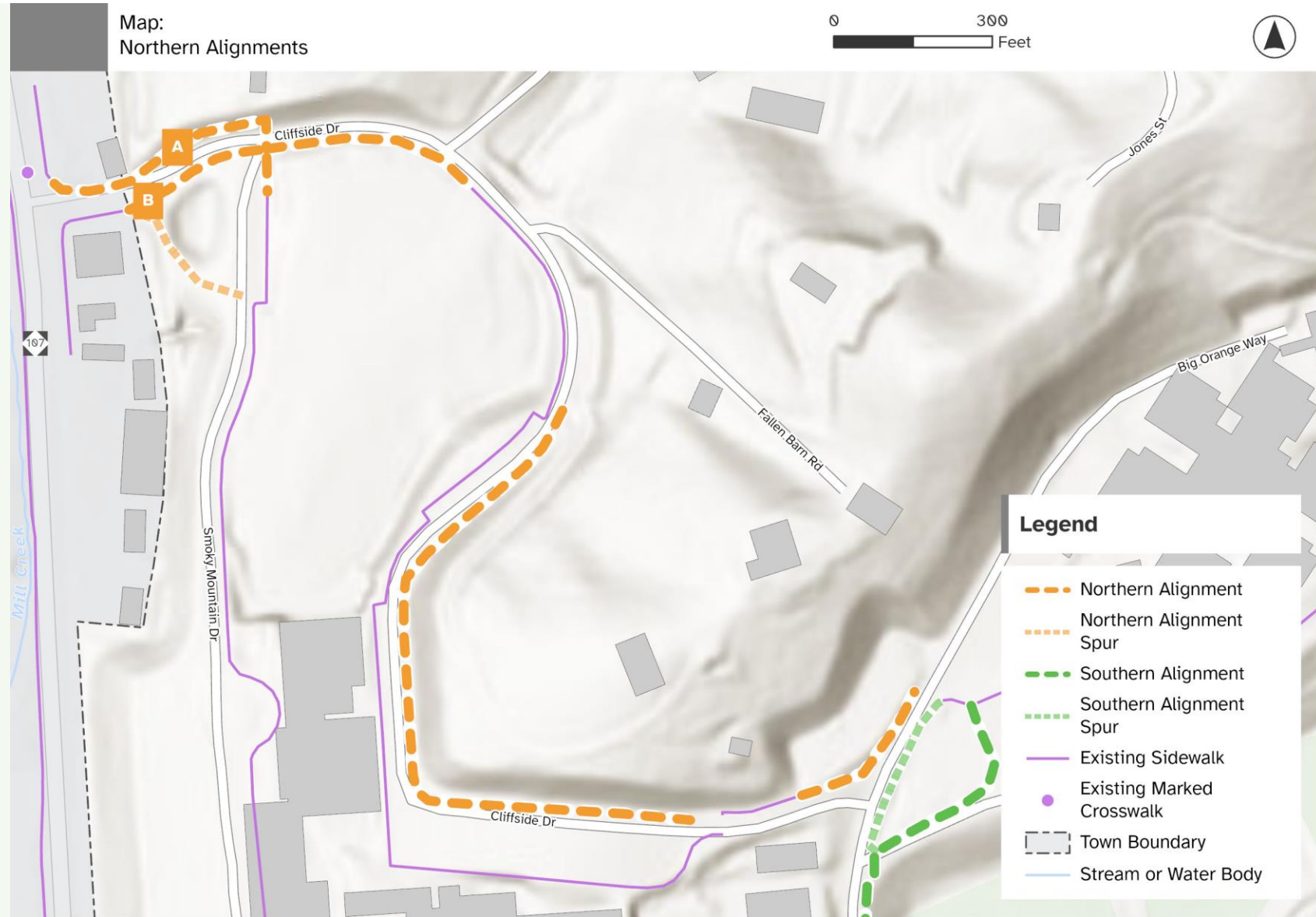
**Legend**

- Town Boundary
- Project Study Area
- Stream or Water Body

study considerations  
**ALIGNMENTS**



study considerations  
**NORTHERN  
ALIGNMENTS**





study  
considerations

# Northern ALIGNMENT

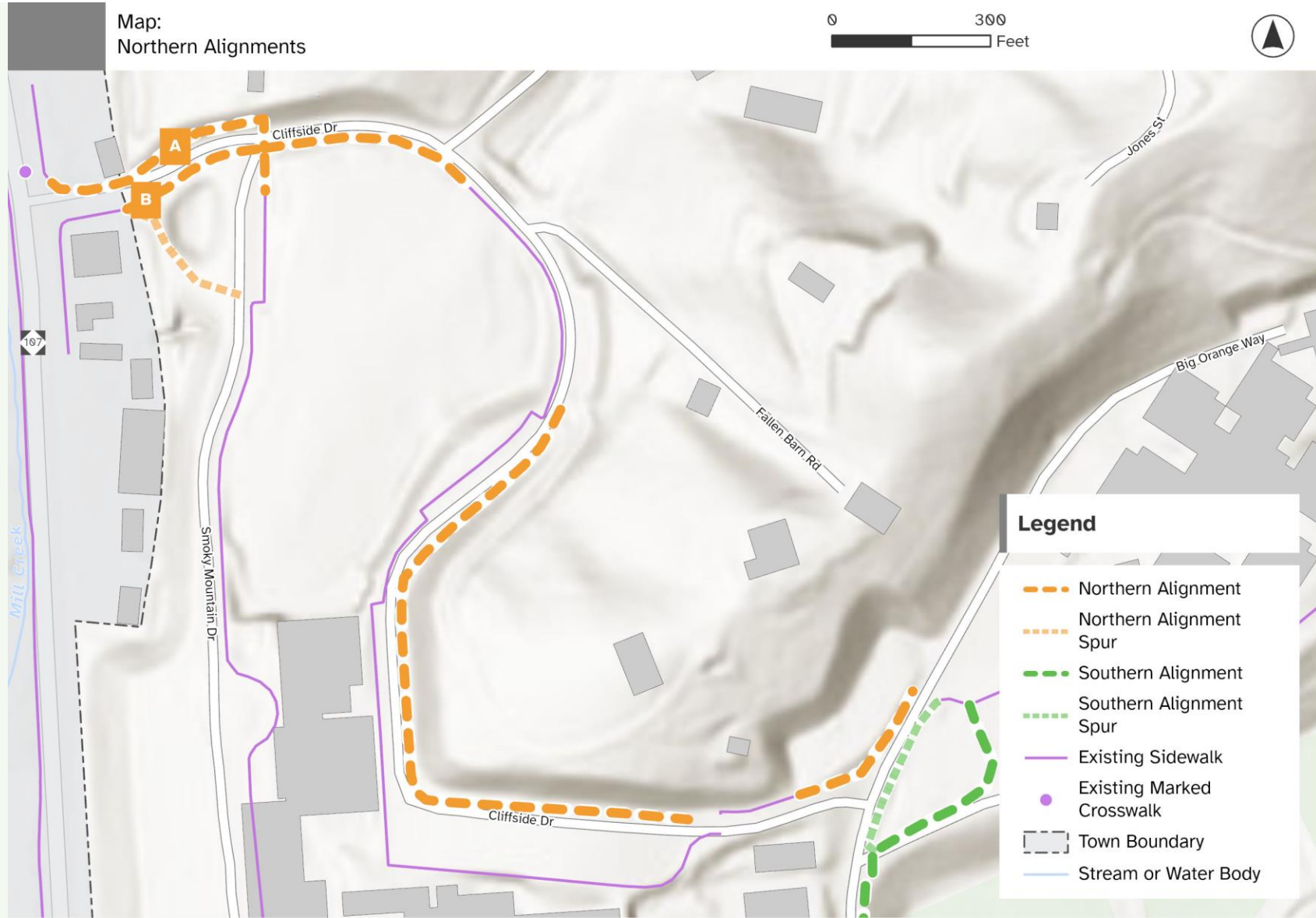


study considerations

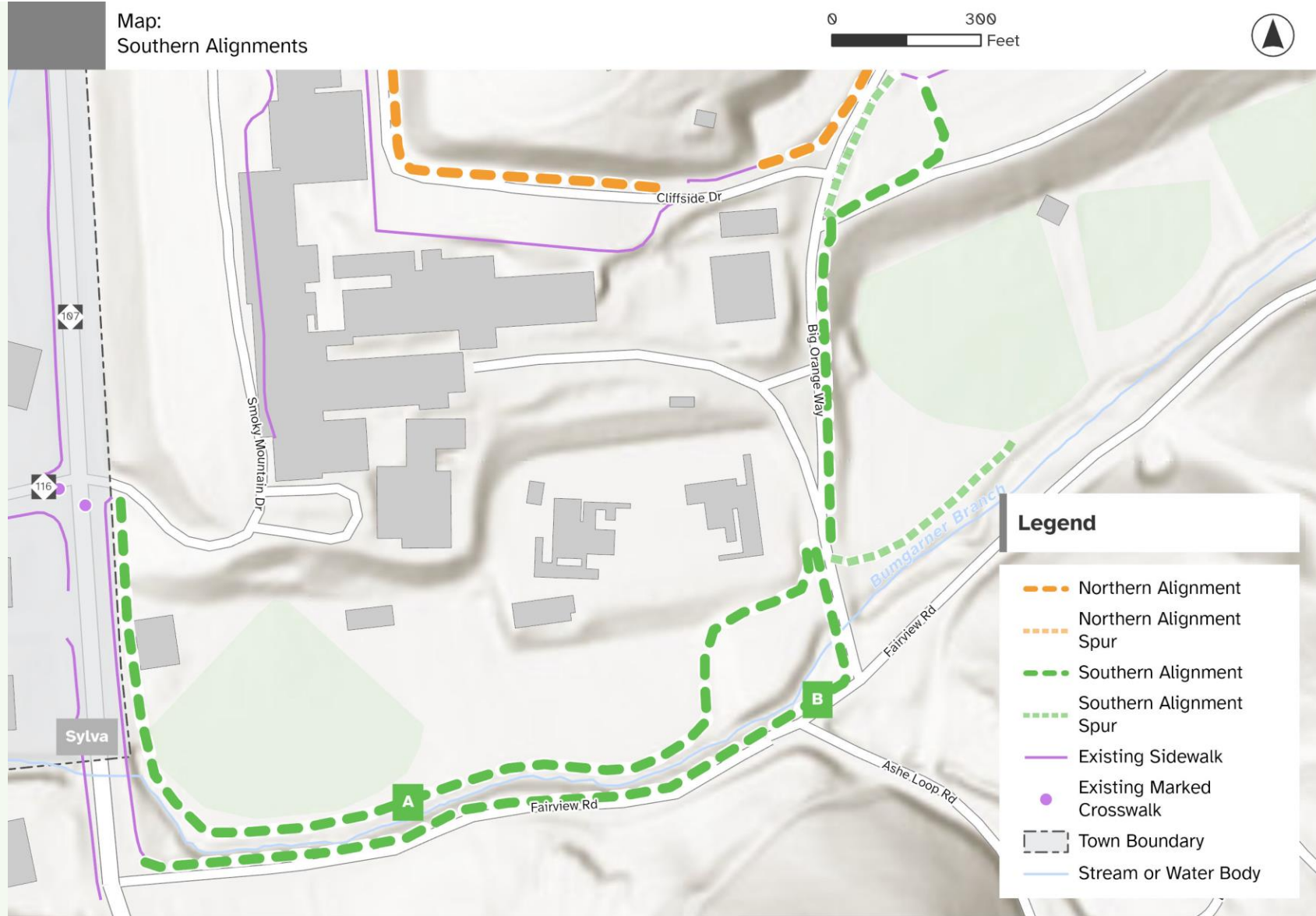
# NORTHERN ALIGNMENTS Conceptual Costs

## \$625,000

Note: Costs are for construction in 2024 and do not include design, permitting, moving utilities or Right-of-Way acquisition.



study considerations  
**SOUTHERN  
ALIGNMENTS**



study  
considerations

# Southern Alignment



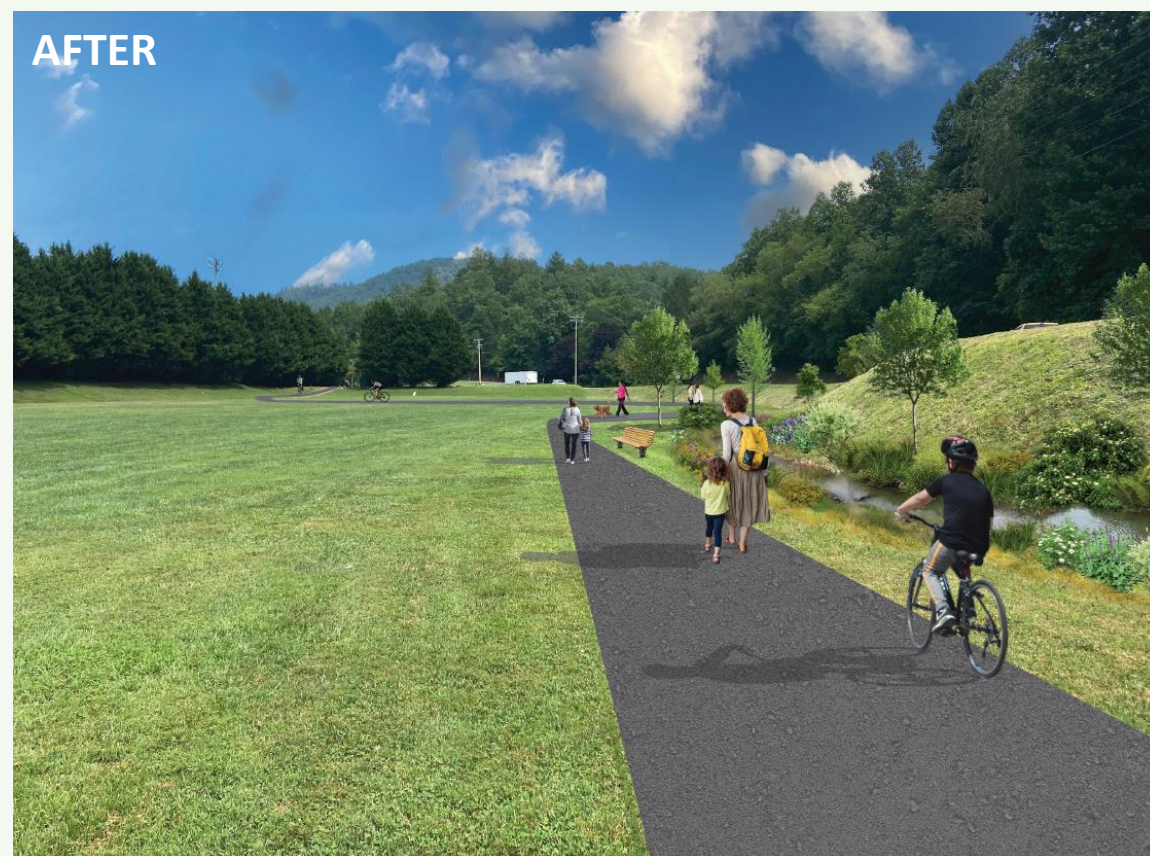
study considerations

## ALIGNMENT (athletic field)

BEFORE



AFTER



study considerations

## ALIGNMENT (Big Orange Way)



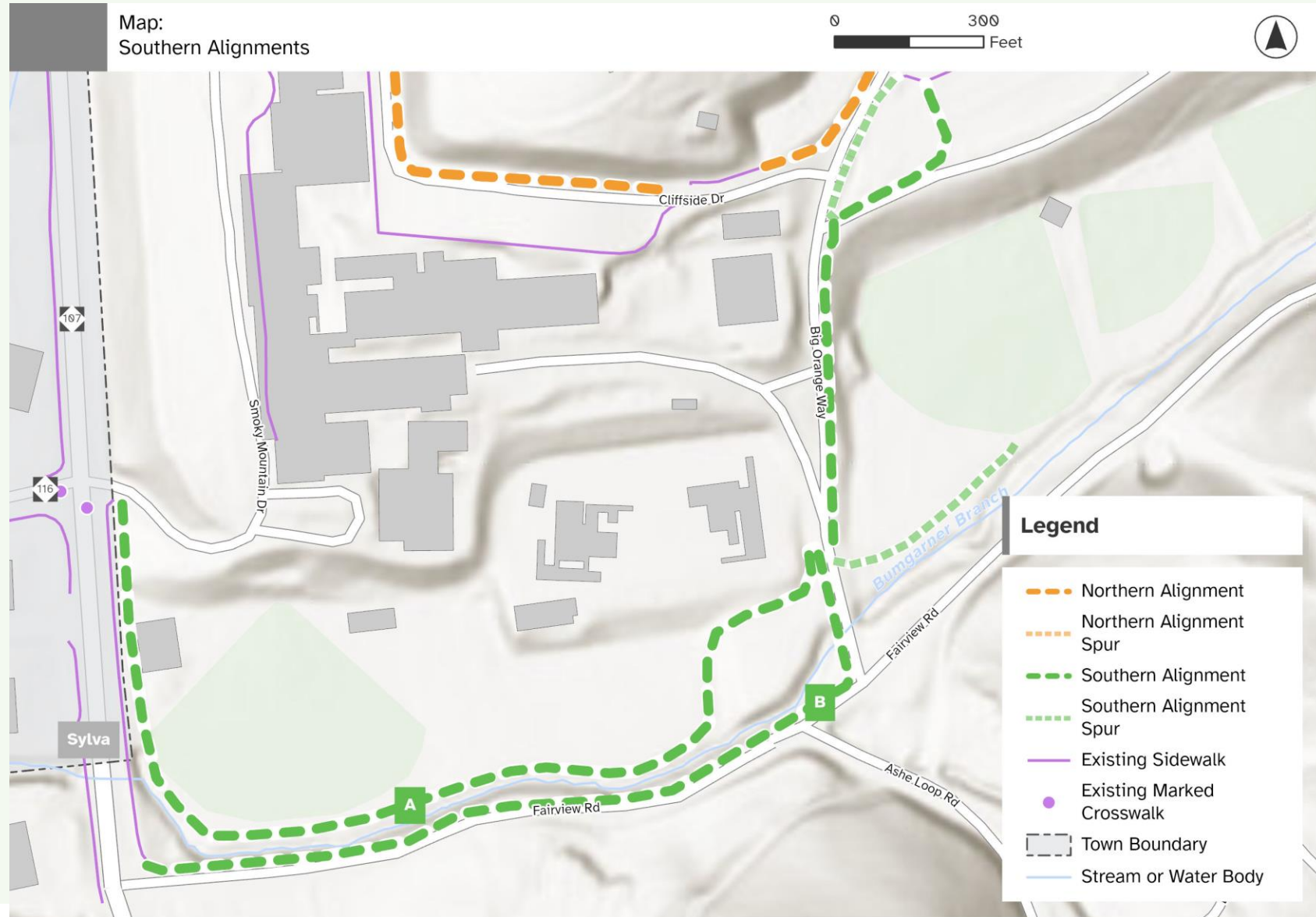
study considerations

# SOUTHERN ALIGNMENTS Conceptual Costs

**A: \$500,000**

**B: \$2 million**

Note: Costs are for construction in 2024 and do not include design, permitting, moving utilities or Right-of-Way acquisition.





## **NEXT STEPS + QUESTIONS**

### **NEXT STEPS**

- Present to School Board
- Determine preferred alternatives
- Refine concepts
- Develop report –April 2024

Once complete, this Feasibility Study will be used to determine and solicit funding from a variety of sources such as NCDOT, state or local grants, or other funding partnerships. There would be additional opportunities for leadership and community input.



# QUESTIONS?



**Teresa Buckwalter, PLA**  
*Multimodal Transportation Planner*  
**[tbuckwalter@trafficpd.com](mailto:tbuckwalter@trafficpd.com)**



**Kristy Carter, AICP**  
*Senior Project Manager*  
**[kcarter@trafficpd.com](mailto:kcarter@trafficpd.com)**