

Two Jackson County Recreation Construction Projects

Splash Pad at the Cashiers-Glenville Recreation Complex

Qualla/Wittier Community Park



Chatham Park Splash Pad in Pittsboro, NC

Request for Qualifications
Issued by



Jackson County
– North Carolina –

Prepared by



EQUINOX
balance through proper planning



WithersRavenel
Our People. Your Success.

To: *The Selection Committee,*

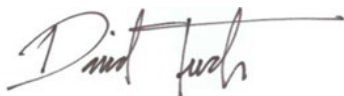
Re: *Request for Qualifications— Two Jackson County Recreation Projects*

Equinox is pleased to present our qualifications for the Two Jackson County Recreation Projects: the Splash Pad and the Qualla/Whittier Community Park. Equinox has been providing recreational planning, design, and site engineering services since 2000, servicing the western North Carolina region from our only office located in Buncombe County. We are proud to have worked on numerous park, greenway, and outdoor recreation projects in Jackson County. We are also pleased to include on our team WithersRavenel who will provide engineering services, surveying, and their experience working on splash pads. Our team has all of the experience, skills and qualifications to successfully provide construction and bid documents, coordinate bidding, and provide construction oversight. The following are a few highlights of our team:

- **Familiarity and Past Work:** Equinox developed the Master Plan for the Cashiers-Glenville Recreation Complex and a Master Plan and assistance with the PARTF application for Qualla / Whittier Park. We are familiar with the site conditions and the opportunities and challenges of both sites which will lead to efficiency with finalizing the schematic designs. Our time spent on-site for both projects means we can hit the ground running.
- **Experience:** We have provided outdoor recreation and park planning and design services for 65 projects on over 11,802 acres of land. We have planned for 810 miles of trails (26.55 miles built), this includes experience with evaluating trails and facilities for equestrian use. Our team has experience with splash pad design, park construction, bidding, and construction oversight. We have written grants for PARTF and have provided construction oversight with PARTF funded projects.
- **Innovative & Creative Design:** Equinox has assembled a multidisciplinary team of design professionals that will collaboratively work together to provide the best possible design solutions. This includes landscape architects, outdoor recreation designers, engineers, surveyors, and more.

It is my intention to showcase in our proposal response why I feel Equinox is uniquely qualified to provide our services for the two park projects. I hope that you will consider putting our 22 years of experience working in western North Carolina to use on these important projects for Jackson County.

Sincerely,



David Tuch- President of Equinox
david@equinoxenvironmental.com
(828) 253-6856 ext. 202

TAB 1: Firm Profile

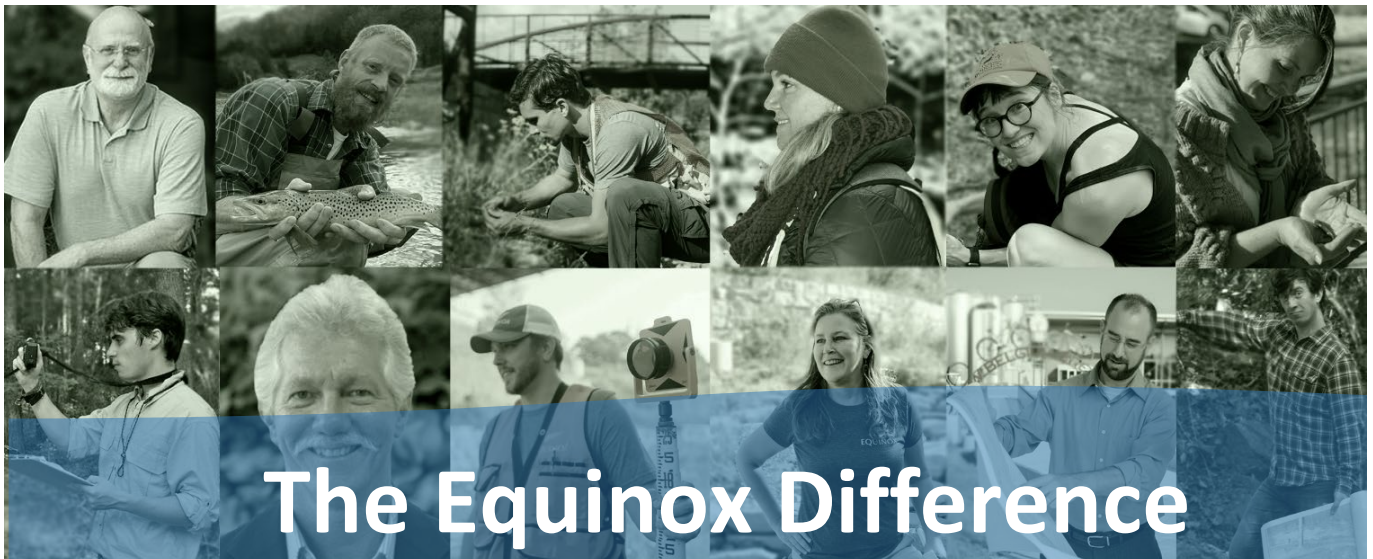


Silver-Line Park in Woodfin, NC, designed by Equinox

FIRM PROFILES

Equinox

Established in 2000, Equinox is a planning and design firm with a focus on conservation, sustainability, and environmentally responsible land development. Equinox an S Corporation and is a trusted partner and regional leader providing the tools and expertise to help produce tangible benefits for our clients, for the communities in which we work, and for the environment. The depth and breadth of our work includes regionally and nationally recognized projects for parks and greenways, sustainable design, and green infrastructure/stormwater management. We are known for our ability to integrate sustainable design and placemaking into recreation based projects.



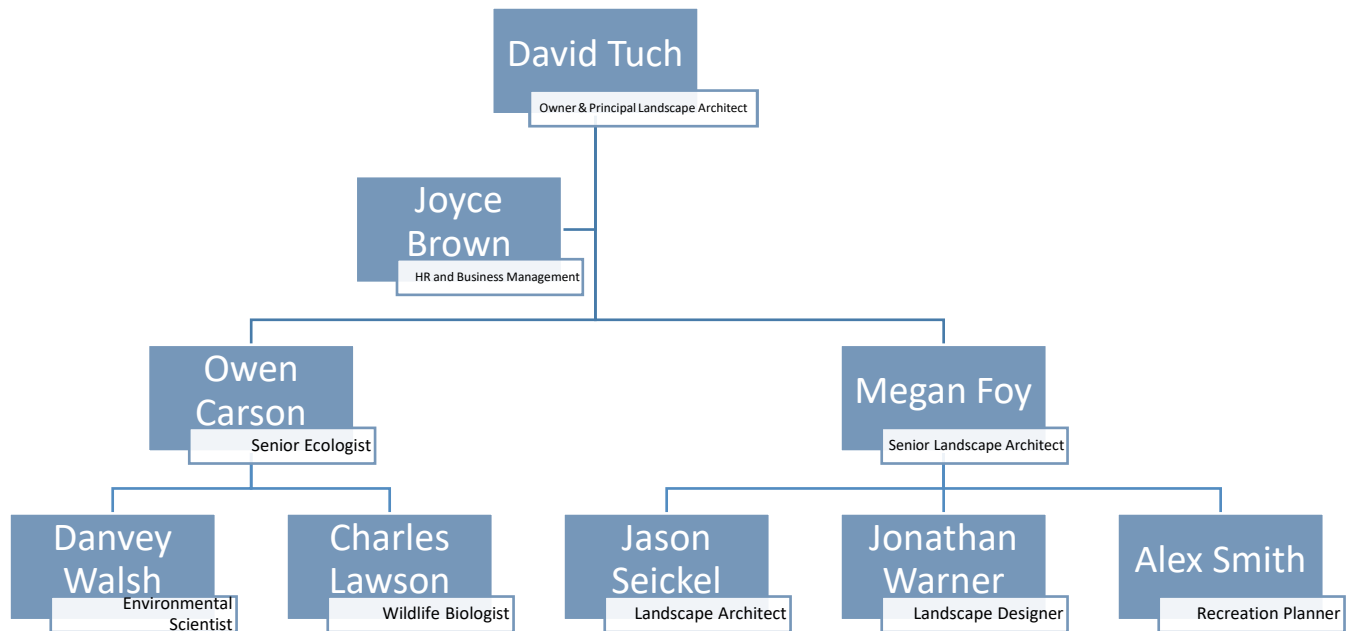
The Equinox Difference

Equinox's talented and passionate multi-disciplinary staff is an integral component to the success of each project we undertake. This includes professionals with diverse backgrounds in landscape architecture, recreation planning, land planning, ecology, natural resources, environmental science, and Leadership in Energy & Environmental Design. Equinox staff includes a total of 11 employees.

WithersRavenel

Founded in 1983 as Withers & Ravenel, Inc., WithersRavenel is now an employee-owned company (ESOP), equipped with more than 38 years of serving a wide array of clients and projects through innovative and cost-effective engineering solutions in North Carolina. Our firm of over 370 employee-owners excel at providing environmental, geomatics, land planning and development, funding and asset management consulting, stormwater, transportation, and utilities services. Our headquarters is in Cary and we have branch offices in Asheville, Charlotte, Greensboro, Lumberton, Pittsboro, Raleigh, Southern Pines, and Wilmington.

Equinox Organizational Structure



TAB 2: Team Information



The Equinox Team has the capacity to perform the work for the park projects. Equinox has a reasonable amount of projects in which we have contracts. Our workload amount is consistent with previous years. Equinox places a priority on working with repeat clients such as Jackson County.



David Tuch, Landscape Architect, RLA • Equinox • MLA and Conservation Ecology & Sustainable Development, (University of Georgia) • BS, Plant & Soil Science (University of Delaware) • David will serve as the Principal-in-Charge and provide QA/QC and oversight of the design. David is the owner of Equinox. His work includes regional planning, recreational master plans, greenways, parks, sustainable design, and green infrastructure. He is serving as the project manager for Riverside Park and has worked on numerous projects in Jackson County. David has served as the project manager for several award winning projects that include parks and greenways. David has worked on over 100 park, greenway and trail projects. He has also worked nationally on numerous nature based parks from master planning to the development of construction documents for projects ranging in size from 2-100 acres in size.



Jonathan Warner, Project Manager and Environmental Designer • Equinox • MS, Urban Environmental Systems Management (Pratt Institute) • BS, Landscape Architecture (University of Georgia) • Jonathan will serve as the Project Manager and be involved in all aspects of the projects. Jonathan has experience in the public design process, park design, greenway design, and placemaking. He brings quality design and attention to detail to Equinox's design projects from concept to construction documentation. Some of Jonathan's recent projects include work on Riverside Park, Silver Line Park, Bridge Park, and multiple greenway and trail projects. He has worked in both the public and private design sectors, and has worked in North Carolina, South Carolina, Tennessee, Kentucky, and New York. The diversity of his experience enables him to connect with a large variety of clients and lends a unique perspective to project work.



Jason Seickel, Landscape Architect, RLA, CEPSI • Equinox • MLA, Landscape Architecture (University of Florida) • BS Physics Education (UCF) • Jason will serve as the lead designer working closely with the Jonathan. Jason works on master planning projects, site design and site engineering for parks, greenways, and outdoor recreation projects from conceptual design through construction, bidding and construction administration. He is currently providing construction observation and administration for Black Bear Day Use Area and Silver Line Park. Jason also focuses on design of innovative stormwater control measures and integrating these into private and public projects. Jason has spoken at the city, state, and national level on the importance of planning and design for park and public spaces in connecting people back to nature and designing with reduced barriers regarding social equity and accessibility.



Megan Foy, Landscape Architect, RLA, LEED AP • Equinox • MLA (University of Georgia) • BA Biology (UNC-Chapel Hill) • Megan will be involved in schematic design and developing construction documents. She is skilled in park and greenway, landscape design, ecological restoration, stormwater design, and low impact development. Megan has a keen eye for the technical aspects of the landscape architecture profession which aids in her success in developing detailed designs. She has also led the public and stakeholder engagement process on many of Equinox's outdoor recreation projects. She has developed several recreation management plans such as the Chestnut Mountain Nature Park Management Plan, which gives her the ability to assess design for long term maintenance and operations.



Warren Ladbroke, PE, LEED AP, PMP – design • Withers Ravenel • Warren will provide technical design for the splash pad and civil engineering for utilities. Warren has a passion for learning and growth, with wide-ranging U.S. and international experience of more than 25 years in everything from land and resort development to water resources engineering. Much of his international work in engineering and land development experience has involved infrastructure planning and reconstruction, which he is passionate about. At WithersRavenel, in addition to providing leadership for commercial development team, he works on improving internal systems and project delivery while focusing on long-term strategy and growth.



Marshal Wright, PLS – Survey • Withers Ravenel • Marshal will provide survey needs for both projects. He is a surveyor and survey project manager with a background in conventional and GPS field procedures, research, and data processing. He performs boundary topographic surveys; bathymetric surveys; boundary resolution; as-built; monitoring; planimetric and topographic mapping, recombination, right-of-way dedication, and easement mapping. Marshal specializes in remote sensing technologies, including high definition 3D laser scanning, unmanned aerial systems (UAS) legality, flight planning, 3D modeling, orthophoto/surface model generation. He is also competent with stream designs, pebble counts, and pavement/sub-pavement analyses. He has expertise in mapping, designing, and analyzing stream projects from a variety of geographical areas. He also has experience in soil and concrete testing.



JOSEPH TURNER, PE – Construction Administration • Withers Ravenel • Joseph will provide utility engineering coordination and assistance with construction administration services and guidance with bidding. Joseph brings years of transportation design and construction administration experience rooted in his work for the North Carolina Department of Transportation and Town of Knightdale. Specifically, he provides driveway and encroachment permitting, erosion and sediment control plans, right-of-way and utility coordination, plan review, and capital improvement project cost estimating.

TAB 3: Project Experience



I.C. King Park in Knoxville, TN, designed by Equinox

Featured Project Experience



Project Year:
Ongoing

Client / Contact:

Town of Woodfin
Woodfin, NC

Luke Williams
Project & Facilities Manager
Woodfin, NC
(828) 259-5805

Riverside Park

In 2020 Equinox created a master plan document for the expansion of Riverside Park to include The Woodfin Wave at Riverside Park. Current services to the Town of Woodfin for this project include the development of Construction Documents, Construction Oversight, and coordinating adherence to Park and Recreation Trust Fund (PARTF) requirements. This riverfront park will be Western North Carolina's premier urban whitewater destination. The park will be a central node on the Woodfin Greenway and Blueway. Equinox developed a park master plan that is inviting and inclusive to all members of the community and helps build community by being accessible, welcoming, and celebrating the community's diverse assets. In addition, the park tells the story of the French Broad River and its forces on the Appalachian Mountains through passive and active interpretation.

The park's key features are its greenway connections and kiosks, multiple river access points, including beach access and a boat ramp, a natural playground area, a grand pavilion overlook of the Wave, a train platform for access to the historic Craggy rail line, a stage, shade pavilions, a pump track, creek access, and riparian enhancements and habitat creation.

Deliverables:

- Vision and goals (working with a steering advisory committee)
- Public & stakeholder engagement
- Master Plan & schematic design
- Cost estimates
- Interpretation and wayfinding design
- Coordination with the NCDOT and the Wave engineer
- Construction Documents
- Construction Observation
- Permitting





Project Year:
2020

Client / Contact:
Town of Canton

Nick Scheuer,
Assistant Town Manager
(828) 648-2363
nscheuer@cantonnc.com

Location:
Canton, NC

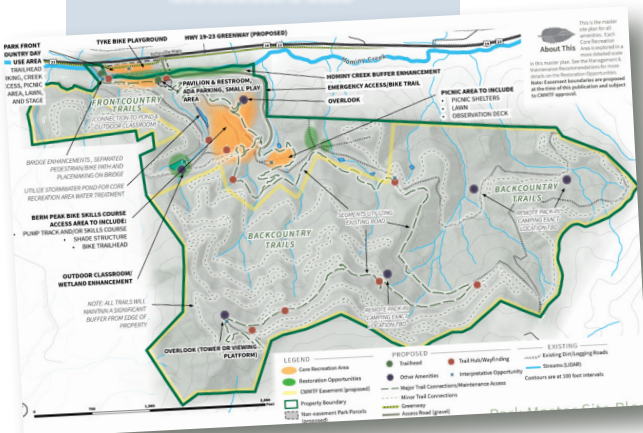
*Click to View the
Interactive StoryMap
& Master Plan*

Chestnut Mountain Nature Park Master Plan

Equinox led the development of a 450-acre nature-based outdoor recreation park that will become a regional attraction in Western North Carolina. Equinox teamed with a trail designer to deliver a plan that details potential amenities and the vast trail system, and ensures that natural resource conservation is paramount. Equinox worked early to map out the natural environment in partner with Southern Appalachian Highlands Conservancy, who was key to making this project happen. This master planning process was informed by Equinox's ecologist and other experts to provide analysis of site conditions and vetting of early design to ensure it works with site conditions and has a minimal impact on the natural environment.

This project is unique in that nearly the entirety of the park property is under permanent conservation easement. Equinox worked closely with several stakeholder groups throughout the process to deliver designs that worked with the restrictions of the land while still providing top notch recreational amenities. The project showcases how conservation and recreation can boost the local economy and enhance local and regional quality of life. The park will be a hub for hiking, mountain biking (including a bike park/skills course for all ages and skill levels), immersion into a backcountry experience, and easy access to a front country day-use area that includes a pavilion, restroom, lawn, creek access, gateway, and trailhead with parking.

Equinox is getting ready to start on construction documents for the front country elements of the park plan.



EQUINOX

Featured Project Experience



Project Year:
2022

Client / Contact:
Town of Woodfin
Woodfin, NC

Eric Hardy
Town
Administrator
Woodfin, NC
(828) 259-5805

Silver-Line Park

After developing a Master Plan for Silver-Line Park in 2017 for the Town of Woodfin in North Carolina, Equinox was hired to develop full construction documents and permitting for the implementation of the park. Leading a diverse team of professionals including engineers and architects, Equinox is working with the town to build a park that will serve as a key hub as part of a larger riverfront revitalization project along the French Broad River including an additional park connected by a greenway and blueway.

Silver-Line Park will include a section of the Woodfin Greenway and Blueway, a river access for boaters and anglers, and a recreational rail stop for the Craggy Mountain Line – a historic section of railroad in the town. Additional features will include a picnic shelter, pathways, and a natural play area. Equinox is working with challenging conditions including the floodway, wetlands, and existing utilities that cut through the park site to accommodate the uses that the public and key stakeholders desire. The town also envisions utilizing an existing commercial facility that is surrounded by the park by converting it to an outfitter, restaurant or other use that supports the greenway and blueway.

Deliverables for the project included:

- Master Plan
- Design Development Plan Set
- Construction Documents
- Local, State, and Federal Permitting
- Construction Observation and Administration



Featured Project Experience



Concept Description

Concept A includes 57 parking spaces, 2 of which are ADA-accessible spaces, with a one-way traffic flow. Parallel spaces are given to accommodate parking for city work trucks observed on-site. The bioretention area is a strong, central feature with an outfall into a quiet rain garden in the northeast corner of the space. Weirs double as safe passage across and engagement opportunities with the bioretention. An entry arch is proposed on the pedestrian entry to the space, which is repeated to the west at the existing pathway to unite the two sides of the park. A simple granite fines path follows the lot edge and continues through a spacious picnic area before connecting to the existing sidewalk at the pavilion. A side path leads to a viewing platform nestled between the existing trees over Scott Creek. Food trucks would be accommodated in the west-most parking bay, which could be easily closed off to create a true court, with a flex event/dining space immediately to the north. This space could be filled with movable furniture for daily use but also host a food truck or vendor during festivals and events. The central location and scale of the food truck court would activate the entire park and unite the east and west sides.

Example Imagery



Viewing Platform
Scott Creek Park, NC



Entry Arch
Scott Creek Park, NC



New Bioretention Cell, NC

Summary

- Maximizes parking
- Allows for flexibles zones for use
- Stormwater
- Keeps truck parking

Project Year:
2021

Client / Contact:
Town of Sylva

Paige Dowling, Town Manager
Town of Sylva
(828)586-2719

Location:
Sylva, NC

Bridge Park

As a part of the Scott's Creek Watershed Action Plan that Equinox developed in 2018, Bridge Park was listed as an important location to implement stormwater control measures to help improve water quality in Scott's Creek.

In 2021, the Town of Sylva hired Equinox to develop a plan for creating a stormwater control measure within the parking area for the existing community park. This plan includes a system of interconnected bioretention cells, a more functional parking arrangement, a variety of native plantings, and an accessible sidewalk connection to the park. The project involved data collection, a topographical survey, conceptual design, and construction documents.

Deliverables:

- Site assessment
- 2 Conceptual designs
- Construction Documents



Featured Project Experience



Savannah Park

Project(s) Year:

2017-2018 Planning, Design,
Engineering
2019 Construction Complete

Client/ Contact:

Jackson County Parks &
Recreation Department
Rusty Ellis
(828) 293-3053
rustyellis@jacksonnc.org

Location:

Jackson County, NC

Equinox provided conceptual design services through construction documents for this community park, first identified as a need in the Jackson County Recreation Master Plan update drafted in 2013 by Equinox. Savannah Park is located in the rural Savannah Community and includes the following programming elements:

- **Nature Play Area**, including custom designed play structures inspired by the natural communities of the area-including a bear den climbing structure, play boulders and tree stumps, a dry creek bed crossing, 'caves' and tunnels, an edible berry patch, and a 'sand circle'.
- **Playground Structures Layout**, including incorporating separation of ages by play and safety 'fall' zones into the design.
- **Utility and Floodplain Coordination** to develop a workable site plan for a heavily constrained site including an existing septic easement, 100-year floodplain, and overhead utility lines
- **Public Workshops and Open House**, public review of conceptual design to incorporate preferred elements.
- **A Master Plan with an illustrative image board of site elements**
- **Construction Documents & Permitting Facilitation**
- **Construction Oversight**

Featured Project Experience



Project Year:
2019

Client / Contact:
Knox County Parks & Recreation

Shauna Godlevsky
Parks & Greenways Coordinator
Shauna.godlevsky@knoxcounty.org
865.251.6610

Location:
Knoxville, TN

I.C. King Park

Equinox was hired by Knox County Parks and Recreation to help develop a new 10-acre expansion for I.C. King Park. The 280-acre park contains 8 miles of multi-use trails that wind along the shoreline of Knob Creek, an inlet of the Tennessee River, and through heavily forested woods. The existing trails are a local favorite for hikers, trail runners and mountain bikers.

The new expansion of the park connects to the trail system and provides for additional recreation opportunities. As part of the park, Equinox provided design, site engineering and permitting. The park expansion included the design of a 2-acre dog park that includes a shelter, benches, and a water fountain. Visitors to the park will also enjoy a new playground, picnic pavilion with picnic tables, and restrooms. New trails connect to the existing I.C. King trail system just behind the dog park. This included a new entrance to the larger park system which added 40 parking spaces. This location serves as a key trailhead for the park. Additional design features included lighting, shade trees, sidewalks, and a kiosk. This was a grant funded project in which Equinox's design complied with all of the grant requirements.



EQUINOX



Project Year:

2017

Client / Contact:

Greg Walker
Town of Fletcher
Parks and Recreation Director,
Town of Fletcher
(828) 778-0735

Meritor Park - Town of Fletcher

The Town of Fletcher was gifted 74-acres of land for recreation use along Cane Creek in Fletcher, North Carolina. The property is rich with natural assets including the Creek, multiple streams, and wetlands. Equinox developed a nature-centric park master plan that capitalizes on the natural resources of the site. The design included a splash pad, restrooms and pavilion, and playground.

The plan was developed to have extensive public process, including a day-long stakeholder workshop, two public open houses, involvement of Town Council and others. Throughout the process the greatest desires of the public included extending the existing Cane Creek Greenway from an existing park to this site, adding more walking paths, and providing an outdoor event space.

Deliverables for the project included:

- Recreation needs, and how the site fits into the larger regional recreation context
- Site analysis
- Two concept plans to take to the public and stakeholder for comment
- A site master plan and blow-up of the "Play Area"
- Phasing plan
- Schematic Design
- Cost estimate summary and details
- A five-year action plan



Judaculla Rock

While working closely with Jackson County, the National Forest Service, the Eastern Band of Cherokee's Tribal Historic Preservation Office, and archaeologists, Equinox crafted a plan that celebrates Judaculla Rock's cultural heritage while respecting the natural and historic integrity of this site.

Since the site has considerable archaeological significance as it is one of the most well-known petroglyphs in the southeastern United States, it was important to limit the footprint of a decking system to minimize ground disturbance. The plan included excavation of soil that has accumulated around the petroglyph, known as Judaculla Rock, achieving historic ground elevations that date back to the 1920's. This site is on the National Register of Historic Places.

Equinox crafted a stormwater, sediment and erosion control plan, revegetation plan, overlook, and pedestrian circulation for access to the Judaculla Rock. A trail system accesses the site and terminates at the observation deck which provides views of the petroglyph. The deck was designed to appear as if it was embracing the rock, while not detracting from the focus of the rock itself. Interpretive signage was integrated into the decking. ADA accessibility and long term maintenance were also integrated into the design. The trail system passes through a thick stand of rivercane which also has cultural significance to the Eastern Band of Cherokee Indians.



Project Year:

2009 - Design
2011 - Construction

Client/ Contact:

Jackson County
Rusty Ellis, County Parks
and Recreation
(828) 293-3053

Location:

Jackson County, NC

KNIGHT FARM COMMUNITY PARK | CHATHAM PARK PITTSBORO, NC

Knight Farm Community Park is a 10-acre multi-purpose recreation facility nestled in the residential area of the Chatham Park community. The park features colorful playhouse equipment, a dragon-shaped climbing gym, a measured walking trail on the perimeter, a large multi-use field, a splash pad with water fountain, a dog park and a natural playground with live-edge tree trunk balance beams and slide through a rock garden. A covered pavilion provides public restrooms and several picnic tables. At just over 1600 square feet, the splash pad portion of the project provides multiple opportunities for water play at any age. A bioretention area styled as a garden provides stormwater management for the park. WithersRavenel's stormwater engineers designed the site to incorporate native trees and pollinator plants, layers of natural filter media under the topsoil, and an outflow device to transport runoff into the storm drainage system. Then the firm's in-house graphic designers created educational signage to explain how the garden works hard to protect the environment. Chatham Park Investors, LLC conceived and constructed the park. They officially donated it to the Town of Pittsboro during a grand opening ceremony held on May 27, 2021.



AYDEN DISTRICT PARK | TOWN OF AYDEN AYDEN NC

Working with the Town of Ayden, WithersRavenel prepared the park master plan and PARTF grant application for Phase 1 of the Ayden District Park. Phase 1 included a combination football/soccer field, splash pad, playground, tot lot, volleyball sand court, bocce ball and shuffleboard courts, horseshoe pits, picnic shelters, restroom building, and walking trails. Following the award of the PARTF grant, WithersRavenel prepared construction documents for Phase 1. Construction began in the spring



of 2013, and the park was officially dedicated on June 24, 2014. At just over 1,500 square feet the splash pad provided multiple spray and ground features. WithersRavenel provided site design and permitting services along with bid administration and site construction observation.



PLEASANT PARK | TOWN OF APEX

APEX, NC

Working with the Town of Apex, WithersRavenel provided full site design and permitting services for the 92 acre Pleasant Park. At full build out the park will provide six multi-use athletic fields for soccer and lacrosse, four baseball fields, four tennis courts, six pickleball courts, two basketball courts, beach volleyball, a spray ground, multiple playgrounds and amenities, shelters, a large open play lawn, and a cross country running course.

The spray ground will be a part of the 1.3 acre Enchanted Forest themed amenity area that is full of creative wonders. Inspired by beloved fairy tales, fables, and popular folklore, this inclusive play space will spark imagination and joy in kids of all ages and all abilities. WithersRavenel has completed



construction drawings for Pleasant Park, and construction is currently underway. The spray ground area includes a full custom designed play elements with a pump house and multiple spaces for parents to be with their children while not having to get wet. We look forward to unveiling Pleasant Park with the Town at the ribbon-cutting in later in 2022.



Research Project:
Park activation; Social
interaction among park
users; Diversity of use

**Award winning
research, ASLA 2018**

Activating Parks and Building Community



Honor
Award

Public parks can provide a unique opportunity to bring people together and provide a safe, comfortable, and welcoming environment for social interaction among community members. Activation of parks within a community is not guaranteed however, and Equinox aims to use current research and the study of park success in all of its recreation designs.

Equinox's research in park activation, social interaction, and study of successful parks revealed key design elements which we try to incorporate in our projects. They are:

- **Provide features of interest and added amenities.** Unique features and comforting features provide a draw to the park by giving the park an identity, while added amenities allow park users to spend extended time there.
- **Designing features for accessibility,** including reducing barriers to entry, is vital to allowing a diversity of users to feel welcome. Such barriers typically include physical, visual, and psychological.
- **Design features for comfort and safety,** including flexible spaces, providing clear line-of-sight, and giving park users opportunity to be social and/or secluded.
- **Provide play space** with unique and social opportunities. A variety of unstructured play options allows users of all ages to interact, while structures can grow with the users.
- **Engage the community.** Community involvement can help provide a sense of ownership of the park by the community. Such ownership is vital to the park's success and activation as the community moves to take pride in the park and its future.






TAB 4: References



Whittier Park (current conditions) in Jackson County



Town of Woodfin- Silver Line Park & Riverside Park

Contact: Eric Hardy – Former Town Manager & Special Projects Manager

Phone: 828.253.4887

E-mail: ehardy@woodfin-nc.gov

Town of Canton- Chestnut Mountain Park Master Plan

Contact: Nick Scheuer - Town Manager

Phone: 828-648-2363

E-mail: nscheuer@cantonnc.com

Numerous Park and Greenway Projects in Buncombe County, NC and the City of Asheville

Contact: Lucy Crown –City of Asheville Greenway Planner

Phone: 828) 259-5805 (W) or (828) 713-8757(M)

E-mail: lcrown@ashevillenc.gov

TAB 5: Additional Information



*"I have greatly appreciated the work of Equinox through the years. I consider your firm a valued resource for the community. I know that I can call you for good advice, professional and timely work, and thorough research. Your work has resulted in several successful park, greenway, conservation and stormwater management projects that I have been associated with, and I look forward to working with your team into the future!" - **Elizabeth Teague - Planning Director for the Town of Waynesville***

*"Equinox has been instrumental in the Town of Canton's development of Chestnut Mountain Park. From evaluation to final plan adoption, this group went above and beyond. Communication was excellent, staff was passionately involved in the project and we could not recommend them more for any project being considered!" - **Nick Scheuer, Town Manager, Town of Canton***

*Thank you for the outstanding job you did with site planning at Nikwasi Mound in Franklin. You provided outstanding talent, professionalism, flexibility and helpfulness. Clearly, you care about your work and about your clients. I have only good things to say about Equinox. If you are undecided on who to use for your design work, go with Equinox!" - **Elaine Eisenbraun, Executive Director of the Nikwasi Initiative***

*"The Board of the Mendota Trail Conservancy an especially Brian, Ellen and I express our sincere gratitude for the professional efforts extended by Equinox on our behalf for the advancement of the Mendota Trail. We feel you and your team were fully engaged in the process and genuinely cared about our project on a personal level. That was especially important to us. The Master Strategic Plan for the Mendota Trail formulated by Equinox significantly surpassed our expectations. We feel the information and recommendations of the plan provide numerous avenues for helping us advance our effort. Please include us as a reference if you need glowing accolades from a trail dream, like ours, in its nascent stages." - **Bob Muller, Chairman of the Mendota Trail Conservancy***

"We will not hesitate to engage Equinox again. As I have said before, your whole team was great to work with. We are moving forward with executing the Ramble Master Implementation Plan with clear direction and focus and that is due to our Equinox partners. This plan will not be one that sits on a shelf!"

Margaret Fry Carton- Vision Cashiers

*"Equinox was wonderful to work with. The team went above and beyond in every way possible. I really appreciated their attention to detail and commitment to the project. They were genuinely enthusiastic about seeing the project move forward." - **Paige Dowling, Town Manager, Sylva North Carolina***