



BROADBAND UPDATE

JACKSON COUNTY ECONOMIC DEVELOPMENT

Blue Ridge Parkway - Courtesy of Jackson County TDA

Tiffany Henry
Director of Economic Development

Impact the lack of broadband has had on our community....

- Over 71% of Households are without Broadband in their Homes
- From remote learning and meetings, it forced us to use the internet, highlighting how truly far behind we are.

Top Reasons Broadband Is So Important?

**Safety and
Security**

Education

**Healthcare
Access**

**Increased
Job and
Population
Growth**

**Higher
Property
Values**

**Lower
Unemployment
Rates**

**Higher
Rates of
New
Business**

OVERVIEW OF GREAT GRANT PROGRAM

- **Purpose of GREAT: facilitate economic development through the deployment of broadband to unserved areas across NC**
 - Highly Competitive
 - Internet Service Provider's (ISP's) are applicants
 - Applications due 4/4
 - Target less than 25:3
 - Awardees are required to participate in the Affordable Connectivity Program (ACP) or provide a broad-based affordability program to low-income consumers similar to ACP
 - Currently No Cap on award amounts

- **PROGRAM GUIDELINES**

- Single grant award cannot exceed \$4 million
- Awards for projects in any one county cannot exceed \$8 million
- Minimum speeds of 100:20
- Defined scoring criteria
- 5-year service agreement
 - Deployment Project Period: Two years from effective date of grant agreement
 - Maintenance Period: following deployment phase, service must continue for the remainder of the five year period
- Eligibility for Economically Distressed County
- Unserved census block without 25:3 speed

- **ELIGIBLE PROJECTS**

- Discrete and specific project located in unserved area of economically distressed county.
- Projects do not include middle mile or backhaul
- Projects must be directed to end users (Fiber to the home)
- Areas without Internet service of 25:3

- **INELIGIBLE AREAS**

- Areas where a private provider has been designated to receive funds through other State or federally funded programs specifically for broadband deployment.
 - RDOF census blocks are ineligible for funding

- **No overlap of coverage allowed**

NC GREAT 2022

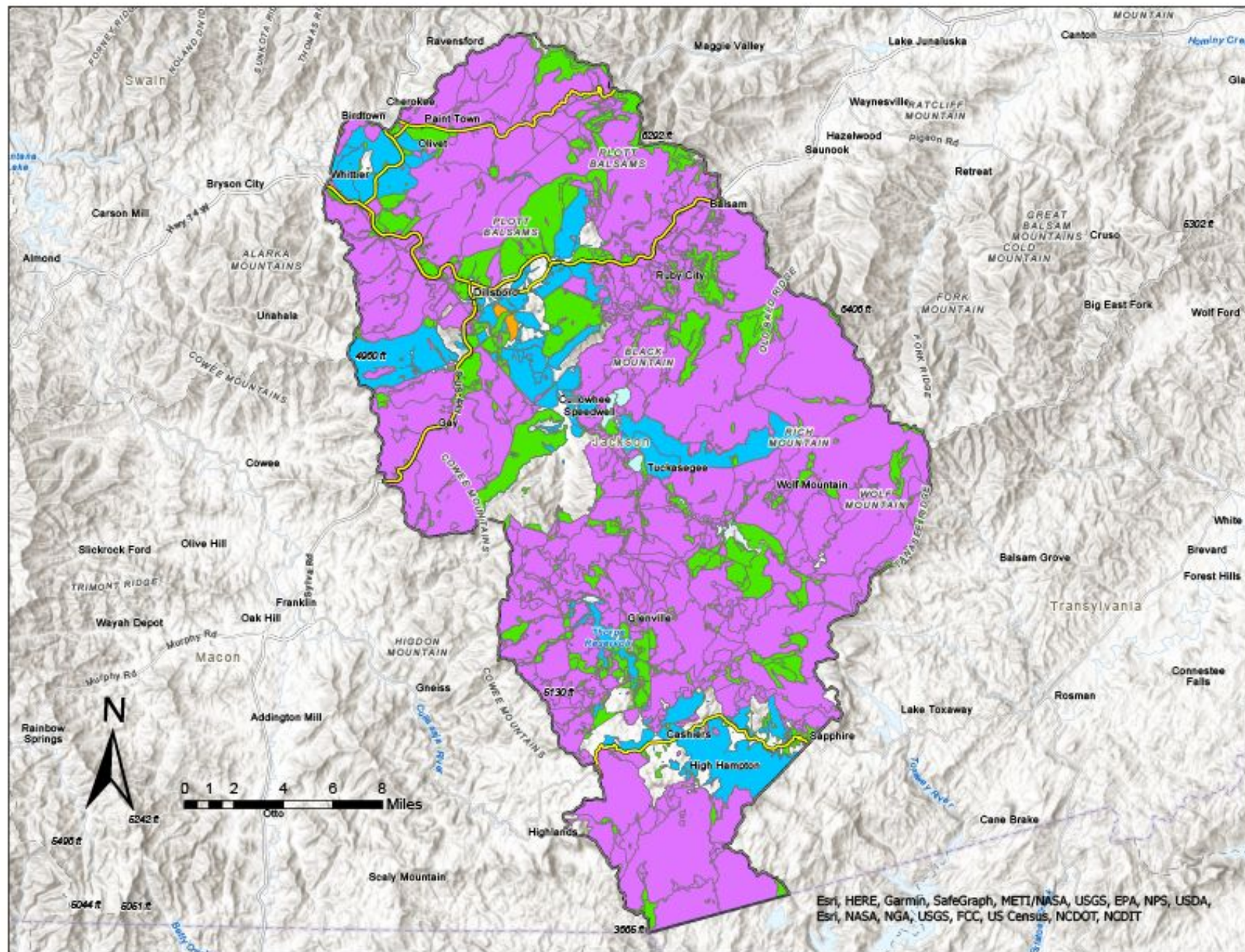
Eligible Areas

Jackson County

Legend

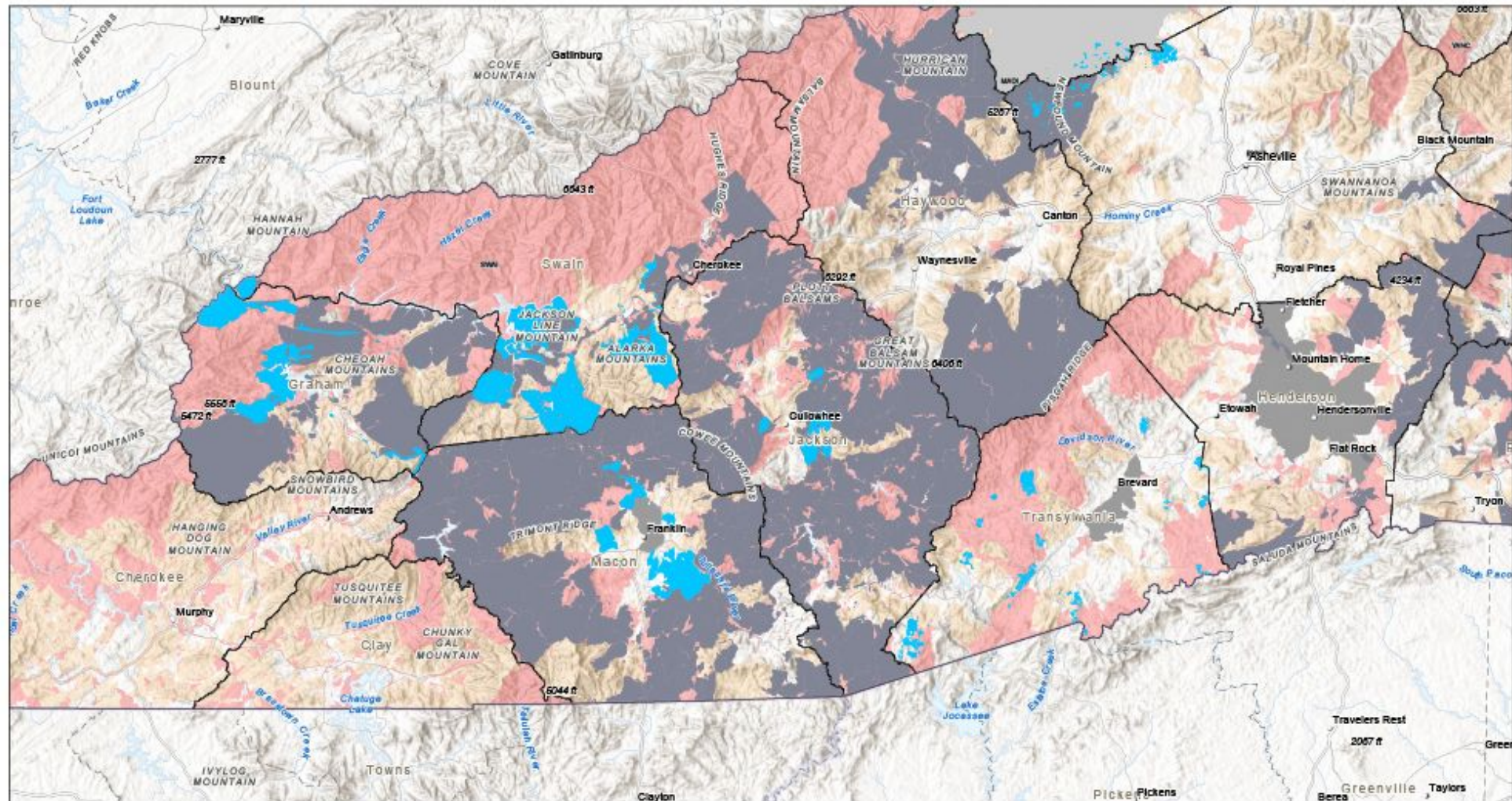
- JacksonCounty_Outline
- Major Roads/Highways
- RDOF 904 RTA 012822
- RDOF 904 Ineligible Areas
- Prior GREAT Award Areas
- FCC Less Than 25/3
- NC Survey Less Than 25/3

RDOF 904 Ineligible Areas represents the preliminary blocks published by NCDIT based on FCC data from Dec 2020. RDOF 904 RTA 012822 represents the actual ready to authorize blocks published by the FCC on 28 Jan 2022.



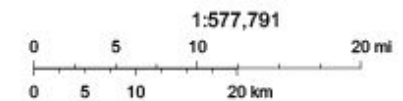
Esri, HERE, Garmin, SafeGraph, METI/NASA, USGS, EPA, NPS, USDA, Esri, NASA, NGA, USGS, FCC, US Census, NCDOT, NCDIT

ArcGIS Web AppBuilder



3/4/2022, 3:58:51 PM

- Previous GREAT Grant Awarded Areas
- NC County Boundary
- FCC RDOF Auction 904 Phase I Results - INELIGIBLE FOR GREAT
- Federal Broadband Grant Award Areas Combined - INELIGIBLE FOR GREAT
- Tier3 Counties' Non-Rural Tracts from Legislation - INELIGIBLE FOR GREAT
- FCC Less Than 25mb/s Download and 3mb/s Upload
- Census Block with NC Broadband Surveys reporting Less Than 25/3 Service (Indicated Fastest Available)



Esri, CGIAR, USGS, Esri, HERE, Garmin, SafeGraph, FAO, METI/
NASA, USGS, EPA, NPS

WHAT IS REQUIRED OF ISP

- Proposed # of households
- Proposed # of businesses
- Map and description of project area
- Base Speed to all locations
- Total Project Cost
- Cost Per Passing
- Proof of financial solvency
- Proposed Partnership (Municipality)
- Support from Community
- Qualifications of ISP
- Assessment of current broadband access in proposed area
- Description of proposed services (speed, pricing, timeline, etc.)
- Technical and Engineering report



PARTNERING FOR GREAT

- County may enter into proposed agreement with more than one ISP
- Proposed partnership must be in writing to qualify for points
 - Provide specific terms and conditions
 - Be signed and attested by all parties
- One Point shall be received if county provides financial match
- Additional two points shall be received where county's financial match is comprised entirely of ARPA funds intended for broadband infrastructure

SCORING AND MATCH

Competitive

Sliding points
scale

Highest score
receives priority
for funding

BIO will review
application and give
"final" score

BIO will
verify match
requirement

MATCHING FUNDS

Determined by
application score

Up to 50% of match
may be from third-
party funding or
other grants*

Highest score
receives priority for
funding

Match can be used
only toward eligible
project costs for
GREAT Grant

*County ARPA Funds
and Unrestricted
General Fund
Revenue Eligible

50%

12.0
points or
less

45%

Greater
than 12.0,
but less
than 17.5

40%

17.5, up
to 22.0

30%

Greater
than 22.0

MATCHING FUNDS

*Potential Match Reduction - Regardless of Score

County Financial
Contribution
partially ARPA

25%

County share
is partially
comprised of
ARPA funds

County Financial
Contribution
entirely ARPA

15%

County share
is all ARPA

NEXT STEPS...

- Where does Jackson County fit in?

