

Angie Winchester

Subject: FW: CFVD - Proposed Rerouting of 4" PVC Storm Drain through Jackson County SRC Property

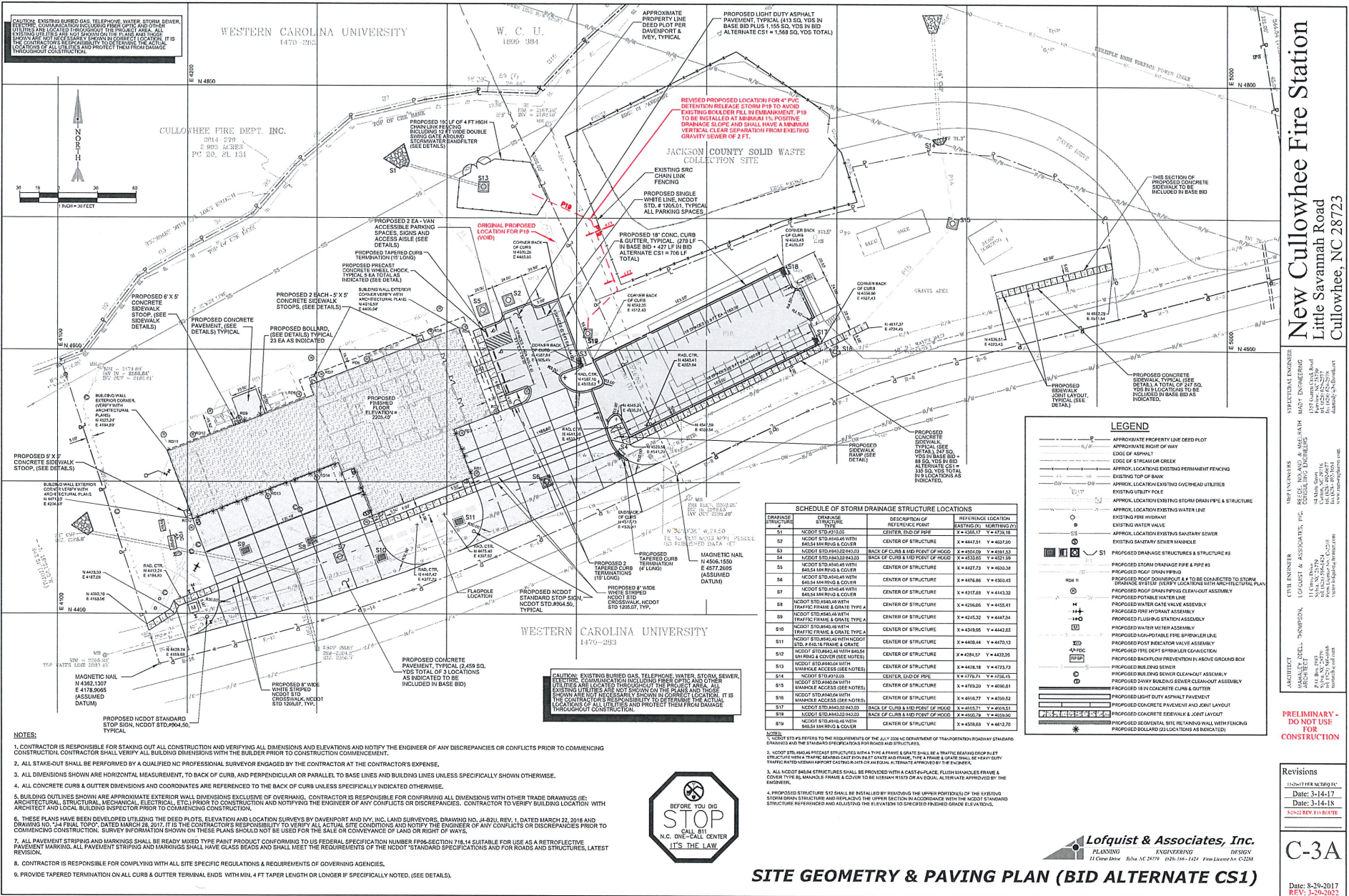
Attachments: Preliminary Plan showing Revised Storm Drain Route through SRC Property.pdf

Good morning Don,

As we recently discussed, attached is a preliminary plan showing the revised routing for the proposed 4 inch PVC storm drain pipe P19. This 4 inch pipe drains the stored storm drainage detention volume over several days and conveys the captured stormwater to the sand filter for water quality treatment. This modification is being proposed due to the existing fill containing large boulders in the original routing alignment for P19 shown as on the construction plans. As a part of the construction contract, the contractor is to provide an as-built survey of all site improvements. Doug Parker informs me that he is having Davenport, Ivey & Associates, Inc. prepare the as-built survey and intends to have them survey and show the as-built location of the P19 pipe on their final as-built survey. Please advise if this is sufficient to proceed with the installation of P19 using the revised route shown on the attached preliminary plan. Call me on my cell if we need to discuss and specifics. Thanks for your assistance, Victor

Victor Lofquist, PE
Lofquist & Associates, Inc.
11 Citrus Drive
Sylva, North Carolina 28779
828-269-1157 cell

E-mail correspondence to and from this address may be subject to the North Carolina Public Records Law and may be disclosed to third parties by an authorized county official.



New Cullowhee Fire Station

Little Savannah Road
Cullowhee, NC 28723

STRUCTURAL ENGINEER
 HARRY ENGINEERING
 10100 N. W. 10th St., Suite 100
 Fort Lauderdale, FL 33322
 Tel: 954-575-7275
 Fax: 954-575-7276
 harry@harryeng.com
 harryeng.com

MECHANICAL ENGINEER
 HARRY ENGINEERING
 10100 N. W. 10th St., Suite 100
 Fort Lauderdale, FL 33322
 Tel: 954-575-7275
 Fax: 954-575-7276
 harry@harryeng.com
 harryeng.com

CIVIL ENGINEER
 LOQUIST & ASSOCIATES, INC.
 11000 N. W. 10th St., Suite 100
 Fort Lauderdale, FL 33322
 Tel: 954-575-7275
 Fax: 954-575-7276
 loquist@loquist.com
 loquist.com

ARCHITECT
 ARCHITECTURE
 11000 N. W. 10th St., Suite 100
 Fort Lauderdale, FL 33322
 Tel: 954-575-7275
 Fax: 954-575-7276
 architecture@loquist.com
 loquist.com

PRELIMINARY -
DO NOT USE
FOR
CONSTRUCTION

Revisions
 11/24/21 BY NERVO/PC
 Date: 3-14-17
 Date: 3-14-18
 3/24/21 BY NERVO/PC

C-3A
 Date: 8-20-2017
 REV: 3-29-2022

SCHEDULE OF STORM DRAINAGE STRUCTURE LOCATIONS

STORM DRAINAGE STRUCTURE	DESCRIPTION OF REFERENCE POINT	REFERENCE LOCATION (EASTING; NORTHING)
S1	NCDOT STD 433.25 CENTER, END OF PIPE	X = 4447.01 Y = 4627.90
S2	NCDOT STD 433.25 CENTER OF STRUCTURE	X = 4447.01 Y = 4627.90
S3	NCDOT STD 433.25 BACK OF CURB & END POINT OF HOOD	X = 4402.00 Y = 4581.53
S4	NCDOT STD 433.25 BACK OF CURB & END POINT OF HOOD	X = 4333.00 Y = 4535.19
S5	NCDOT STD 433.25 CENTER OF STRUCTURE	X = 4427.23 Y = 4603.38
S6	NCDOT STD 433.25 WITH BASKET HOOD COVER	X = 4476.86 Y = 4500.45
S7	NCDOT STD 433.25 CENTER OF STRUCTURE	X = 4317.88 Y = 4443.32
S8	NCDOT STD 433.25 WITH TRAFFIC FRAME & GRATE TYPE-A	X = 4256.60 Y = 4455.41
S9	NCDOT STD 433.25 WITH TRAFFIC FRAME & GRATE TYPE-A	X = 4245.32 Y = 4447.54
S10	NCDOT STD 433.25 WITH TRAFFIC FRAME & GRATE TYPE-A	X = 4245.32 Y = 4447.54
S11	NCDOT STD 433.25 WITH MANHOLE & COVER (SEE NOTES)	X = 4245.32 Y = 4447.54
S12	NCDOT STD 433.25 CENTER OF STRUCTURE	X = 4402.00 Y = 4723.73
S13	NCDOT STD 433.25 CENTER, END OF PIPE	X = 4379.70 Y = 4726.10
S14	NCDOT STD 433.25 CENTER OF STRUCTURE	X = 4379.70 Y = 4698.81
S15	NCDOT STD 433.25 WITH MANHOLE ACCESS (SEE NOTES)	X = 4604.77 Y = 4704.63
S16	NCDOT STD 433.25 WITH MANHOLE ACCESS (SEE NOTES)	X = 4604.77 Y = 4704.63
S17	NCDOT STD 433.25 BACK OF CURB & END POINT OF HOOD	X = 4615.71 Y = 4605.51
S18	NCDOT STD 433.25 BACK OF CURB & END POINT OF HOOD	X = 4615.71 Y = 4605.51
S19	NCDOT STD 433.25 WITH BASKET HOOD COVER	X = 4598.88 Y = 4482.70

- NOTES:
- CONTRACTOR IS RESPONSIBLE FOR STAKING OUT ALL CONSTRUCTION AND VERIFYING ALL DIMENSIONS AND ELEVATIONS AND NOTIFY THE ENGINEER OF ANY DISCREPANCIES OR CONFLICTS PRIOR TO COMMENCING CONSTRUCTION. CONTRACTOR SHALL VERIFY ALL BUILDING DIMENSIONS WITH THE BUILDER PRIOR TO CONSTRUCTION COMMENCEMENT.
 - ALL STAKE-OUT SHALL BE PERFORMED BY A QUALIFIED NON-PROFESSIONAL SURVEYOR ENGAGED BY THE CONTRACTOR AT THE CONTRACTOR'S EXPENSE.
 - ALL DIMENSIONS SHOWN ARE HORIZONTAL MEASUREMENT, TO BACK OF CURB, AND PERPENDICULAR OR PARALLEL TO BASE LINES AND BUILDING LINES UNLESS SPECIFICALLY SHOWN OTHERWISE.
 - ALL CONCRETE CURBS & GUTTER DIMENSIONS AND COORDINATES ARE REFERENCED TO THE BACK OF CURB UNLESS SPECIFICALLY INDICATED OTHERWISE.
 - BUILDING OUTLINES SHOWN ARE APPROXIMATE EXTERIOR BUILDING DIMENSIONS EXCLUSIVE OF OVERHANG. CONTRACTOR IS RESPONSIBLE FOR CONFIRMING ALL DIMENSIONS WITH OTHER TRADE DRAWINGS (IE: ARCHITECTURAL, STRUCTURAL, MECHANICAL, ELECTRICAL, ETC.) PRIOR TO CONSTRUCTION AND NOTIFYING THE ENGINEER OF ANY CONFLICTS OR DISCREPANCIES. CONTRACTOR TO VERIFY BUILDING LOCATIONS WITH ARCHITECT AND LOCAL BUILDING DEPARTMENT PRIOR TO COMMENCING CONSTRUCTION.
 - THESE PLANS HAVE BEEN DEVELOPED UTILIZING THE DEED PLOTS, ELEVATION AND LOCATION SURVEYS BY DAVENPORT AND IVY, INC. LAND SURVEYORS, DRAWING NO. J4-821, REV. 1, DATED MARCH 22, 2016 AND DRAWING NO. 24 FINAL TOP, DATED MARCH 28, 2017. IT IS THE CONTRACTOR'S RESPONSIBILITY TO VERIFY ALL ACTUAL SITE CONDITIONS AND NOTIFY THE ENGINEER OF ANY CONFLICTS OR DISCREPANCIES PRIOR TO COMMENCING CONSTRUCTION. SURVEY INFORMATION SHOWN ON THESE PLANS SHOULD NOT BE USED FOR THE SALE OR CONVEYANCE OF LAND OR RIGHT OF WAY.
 - ALL PAVING STRIPING AND MARKINGS SHALL BE READY MIXED TYPE PAINT PRODUCT CONFORMING TO US FEDERAL SPECIFICATION NUMBER FPM-SECTION 718.14 SUITABLE FOR USE AS A RETROREFLECTIVE PAVEMENT MARKING. ALL PAVEMENT STRIPING AND MARKINGS SHALL HAVE GLASS BEADS AND SHALL MEET THE REQUIREMENTS OF THE NCDOT STANDARD SPECIFICATIONS AND FOR ROADS AND STRUCTURES, LATEST REVISION.
 - CONTRACTOR IS RESPONSIBLE FOR COMPLYING WITH ALL SITE SPECIFIC REGULATIONS & REQUIREMENTS OF GOVERNING AGENCIES.
 - PROVIDE TAPERED TERMINATION ON ALL CURBS & GUTTER TERMINAL ENDS WITH MIN. 4 FT TAPER LENGTH OR LONGER IF SPECIFICALLY NOTED. (SEE DETAILS).



SITE GEOMETRY & PAVING PLAN (BID ALTERNATE CS1)

Loquist & Associates, Inc.
 PLANNING ENGINEERING DESIGN
 11000 N.W. 10th St., Suite 100 Fort Lauderdale, FL 33322