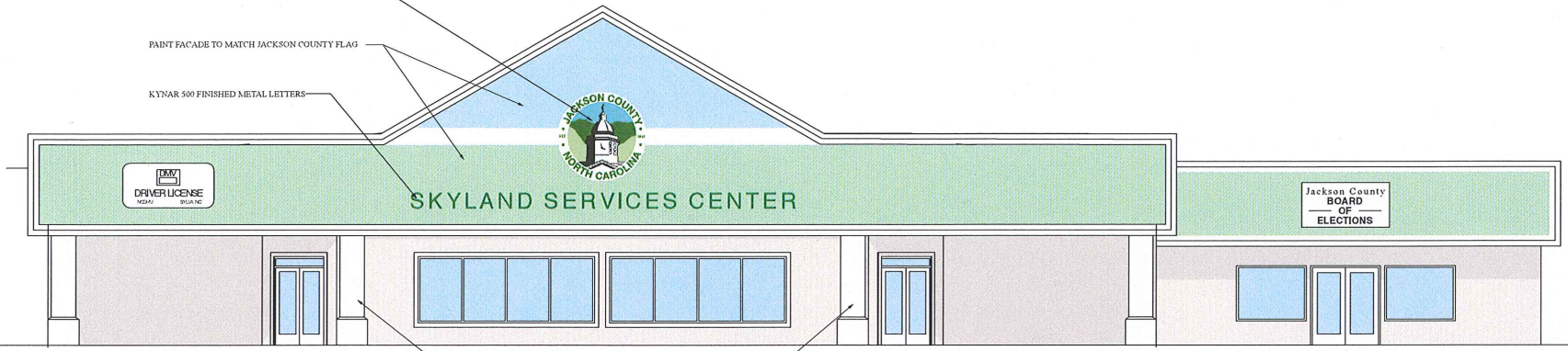


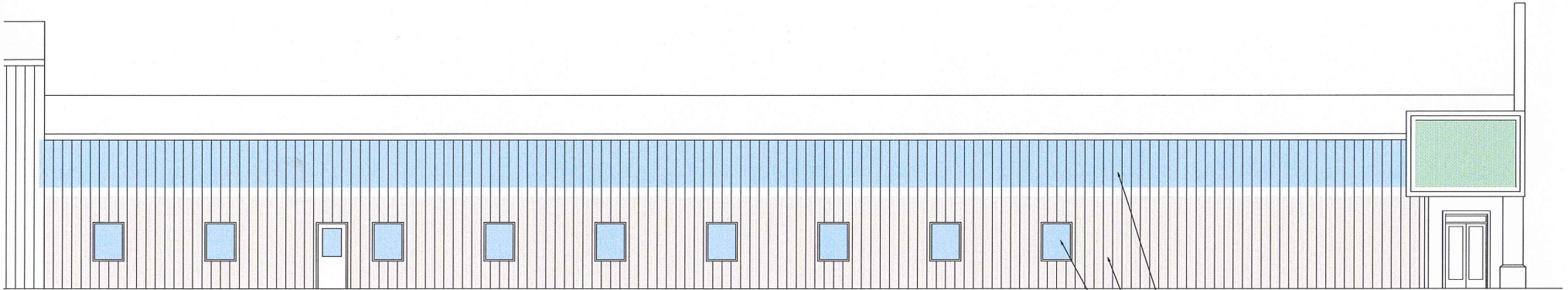
JACKSON COUNTY LOGO (FROM FLAG)

PAINT FACADE TO MATCH JACKSON COUNTY FLAG

KYNAR 500 FINISHED METAL LETTERS



NEW COLUMNS TO MATCH EXISTING



PAINT FACADE TO ALIGN WITH JACKSON COUNTY MOTIF

PAINT FACADE EARTH TONE BELOW 'FLAG'

NEW ALUMINUM WINDOWS AND DOORS



PREFERRED OPTION ① FLOORPLAN
 Scale: 1/8" = 1'-0"



PREFERRED OPTION ① FLOORPLAN
 Scale: 1/8" = 1'-0"

Mahaley Odell Thompson, Architect

ESTIMATE OF POTENTIAL CONSTRUCTION COSTS

Jackson County SSC UPFIT
11/15/16

	QTY	UNITS	\$/UNIT	COST	
Skyland Services Center	Cooperative Extension upfit *	2415	SF	\$135	\$326,025
	Kitchen/ Meeting construction *	1192	SF	\$135	\$160,920
	Soil & Water upfit *	1932	SF	\$150	\$289,800
	Commercial Kitchen stub-up plumbing	1	LS	\$2,000	\$2,000
	Programming/ Conference *	349	SF	\$135	\$47,115
	Mechanical	332	SF	\$85	\$28,220
	Tel/ Comm. Room	85	SF	\$100	\$8,500
	Public Works Storage	839	SF	\$85	\$71,315
	Unfinished Undesignated spaces	644	SF	\$70	\$45,080
	Circulation space: solar tubes, new finishes	2803	SF	\$90	\$252,270
	Re-work sprinkler system	10592	SF	\$7	\$74,144
	skylight feature over the common lobby	1	LS	\$150,000	\$150,000
	Exterior facelift allowance	1	LS	\$100,000	\$100,000
	Sitework/ landscape allowance	1	LS	\$50,000	\$50,000
	subtotal				\$1,605,389
	Contingency 10%				\$160,538.90
	TOTAL CONSTRUCTION COSTS				\$1,765,928

DESIGN FEES	A/E FEES (A, M, E, P, S)	1	LS	72000	\$72,000
-------------	--------------------------	---	----	-------	----------

TOTAL \$1,837,928

Furniture, Fixtures, and Equipment for *	5888	SF	\$15	\$88,320
Allowance for commercial kitchen equipment & hood	0	LS	\$65,000	\$0

GRAND TOTAL \$1,926,248