



Serving as a healthcare bridge for our community

2016 Board of Directors:

Steve Puckett, Board Chair

Clinical Support Director, Smoky Mountain Center

Jessica Ange, Vice Chair

MD, Sylva Family Practice

Melissa McKnight, Secretary

Health Education Supervisor, Jackson County Health Dept

Shannon Powell, Treasurer

Corporate Accountant, Balsam West

Mark Jones

Jackson County Board of Commissioners

Bonnie Claxton

Attorney, Legal Aid of North Carolina

Randal Moss

Income Maintenance Supervisor, Jackson County DSS

Gary Long

Owner, Blue Truck Publishing

Rebecca Mathis

Executive Director, Good Sam

David Trigg, Medical Director

Cherokee Hospital Emergency Department

Steve Heatherly

President and CEO, Harris Regional Hospital

Kathy Wooten

Retired Educator, Jackson County Public Schools

Doug Keskula

Dean, WCU College of Health and Human Sciences

Al Anderson

Adjunct Faculty, WCU

Judy LeRoy Robinson

Director of Field Ed, Assistant Professor of Social Work, WCU



Tuesday Night Volunteer Clinic

***Our mission is
to provide
healthcare to
underserved
adults
as exemplified
by the Good
Samaritan.***

Who are underserved adults?

- Adults 18-65
- No health insurance
 - ineligible for Medicaid, Medicare
- Income below 175% of poverty level
 - Family of 1 < \$20,497.50
 - Family of 2 < \$27,877.50
 - Family of 4 < \$42,437.50
- Serve: Jackson County + counties west

Health Insurance

- Jackson County has the highest percent uninsured among comparators in both age groups for every year cited.

Percent of Population *without* Health Insurance, by Age Group

County	2009		2010		2011		2012		2013	
	0-18	18-64	0-18	18-64	0-18	18-64	0-18	18-64	0-18	18-64
Jackson County	11.7	25.2	10.2	31.4	11.7	30.7	12.1	30.1	10.0	29.0
WNC Region	9.9	24.2	9.7	26.0	9.1	25.2	9.3	25.4	8.6	25.0
State of NC	8.7	21.9	8.3	23.5	7.9	23.0	7.9	23.4	6.9	22.5

Source: US Census Bureau via Jackson County Community Health Assessment

Expanded Care in 2015:

- **Golden LEAF Foundation Grant**
 - 2 year partnership with WCU
 - Full-time Family Nurse Practitioner in clinic
 - Daily provider visits; training FNP students
- **Sisters of Mercy of NC Foundation Grant**
 - 2 years
 - Full-time Nurse Case Manager/Volunteer Coordinator (RN)
- **Increased Community Support**
 - Jackson County Nonprofit Grant- Clinical Services Director (RN)
 - Area Faith Communities, Colleges, Businesses
 - 155 Volunteers logged over 4,104 Volunteer Hours!

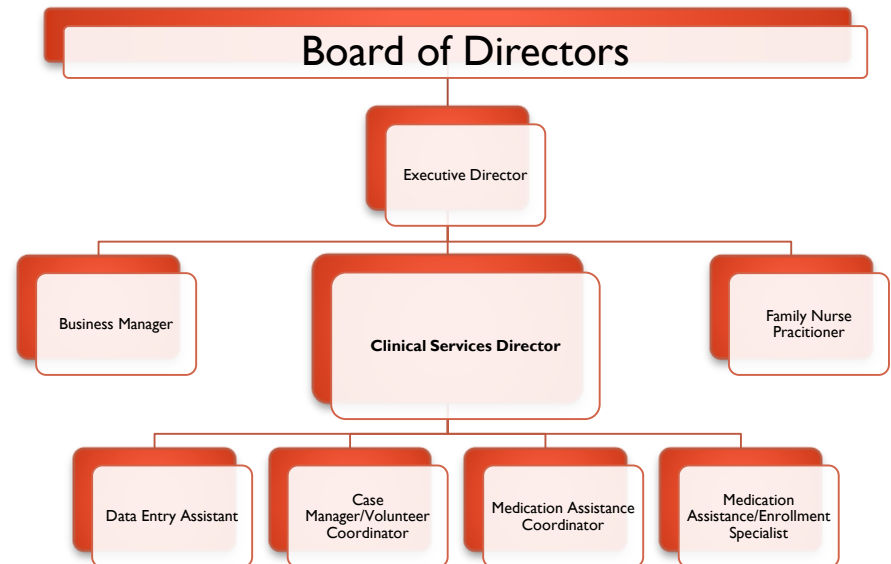
Small Staff, Big Results

- Full-Time

- Executive Director
- Clinical Services Director (RN)*
- Family Nurse Practitioner*
- Case Manager (RN)*
- Medication Assistance*

- Part-Time

- Business Manager
- Medication Assistance*
- Data Intern (5 hours)*



**Grant-funded*

No paid Clinical Support Staff or Office Support Staff.

Serving our neighbors in 2015

Served **627** Unduplicated Individuals:

- Clinic Patients (Primary Care, Case Management, Medication Assistance)
- Community Patients (Medication Assistance Only)

2014

- 427 clinic patients
- 877 provider visits

2015

- 524 clinic patients
 - 22.7% increase
- 1,625 provider visits
 - 85.3% increase

2014

- Daily Nurse Clinic
- Medication Assistance
- Case Management
- Tuesday Night Provider Clinic
 - Volunteer MDs, PAs, FNPs

2015

- Daily Nurse Clinic
- Medication Assistance
- Case Management
- Tuesday Night Provider Clinic
 - Volunteer MDs, PAs, FNPs
- Daily Provider Clinic
 - as of July 2015
 - Monday-Thursday FNP

Access to Primary Care

Good News for our Community:



Volunteer FNP, MD, PA at work on a Tuesday night



patients served



in wait time
between in enrollment &
first medical appointment



more consistent &
timely follow-up care



downward trend in
non-emergency ER visits



health outcomes

What's Next?



Student Volunteers & Interns

Grants:

- Local & Regional Foundations
- Melvin R Lane finalist
- Community Health Grant

Strategic Planning:

- strengthening nonprofit
- providing quality, excellent healthcare to underserved
- finding ways to expand & create additional access
- pursuing sustainable funding models

Investing in Community Health

- Value of Donated Care: over \$1,008,222
 - Care donated to patients by our community
 - Harris Regional Hospital
 - Health Department
 - LabCorp
 - Non-hospital Physician Specialists
- Value of Services provided: over \$1,777,177
 - Direct Primary Care at Good Sam
 - Medication Assistance Program
 - Pharmacy Vouchers

Investing in Community Health

- Value of Donated Support: \$187,237
 - Not patient specific
 - Facility, Medical Supplies, etc.
- Value of donated Healthcare Professional Services: \$121,217
- *For every \$1.00 Good Sam spent, \$11.66 worth of care and services were provided to our patients in 2015.*



www.goodsamcares.org

Thank you for your service to our community!