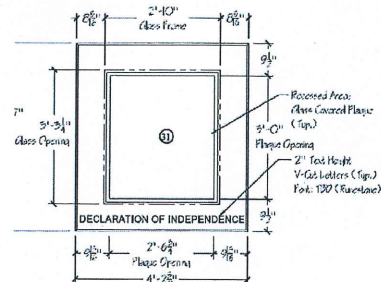


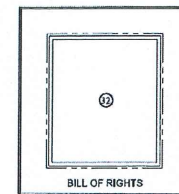
DEVELOPED PLAN VIEW

SCALE: 3/4" = 1'-0"



DEVELOPED PLAN VIEW (THUS)

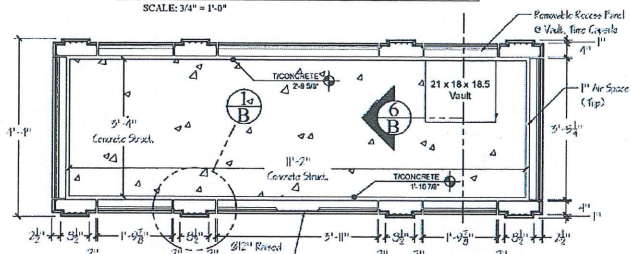
SCALE: 3/4" = 1'-0"



DEVELOPED PLAN VIEW (THUS)

SCALE: 3/4" = 1'-0"

NOTE: Single Plaque Panel Similar in Dimension. Only Text Difference Separates (1)each Required

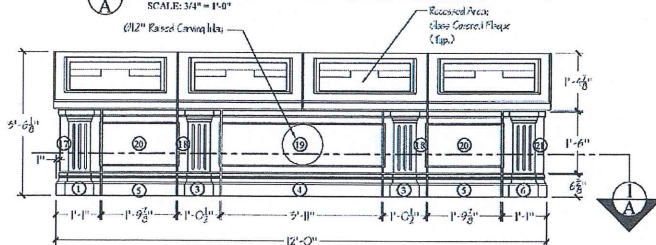


SECTION DETAIL

SCALE: 3/4" = 1'-0"

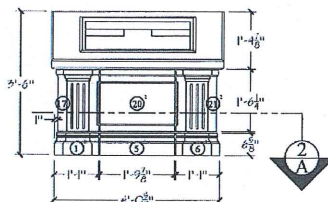
SECTION DETAIL

SCALE: 3/4" = 1'-0"



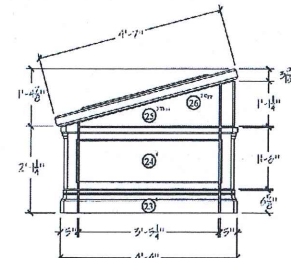
FOUR PLAQUE BASE ELEVATION

SCALE: 3/4" = 1'-0"



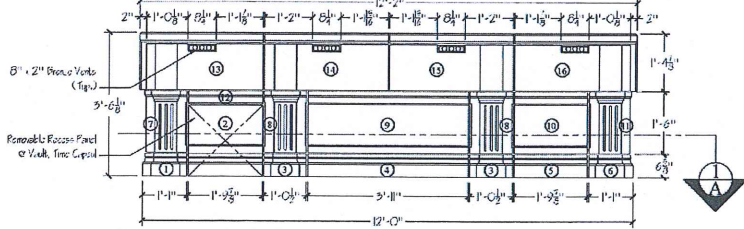
SINGLE BASE ELEVATION (2 THUS)

SCALE: 3/4" = 1'-0"



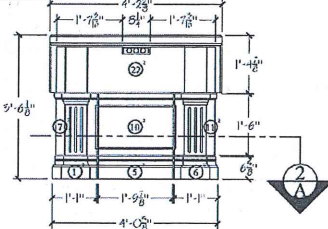
TYPICAL SIDE ELEVATION

SCALE: 3/4" = 1'-0"



FOUR PLAQUE BASE REAR ELEV.

SCALE: 3/4" = 1'-0"



SINGLE BASE REAR ELEV. (2 THUS)

SCALE: 3/4" = 1'-0"

PRINT RECORD		
DATE	NO.	FOR
03-03-15	E-File	APPROVAL
3-16-15	E-File	REVISION 1.1
3-20-15	E-File	REVISION 2
3-30-15	E-File	SETTING
5-12-15	E-File	SETTING 1.1
5-17-15	E-File	SETTING 2.375

NOTE

ARCHITECT AND CONTRACTOR ARE RESPONSIBLE FOR VERIFICATION OF ALL DIMENSIONS AND CONDITIONS SHOWN ON THIS SHOP DRAWING. ACCENT LIMESTONE AND CARVING SHALL PROVIDE STONE EXACTLY AS PER APPROVED SUBMITTAL.

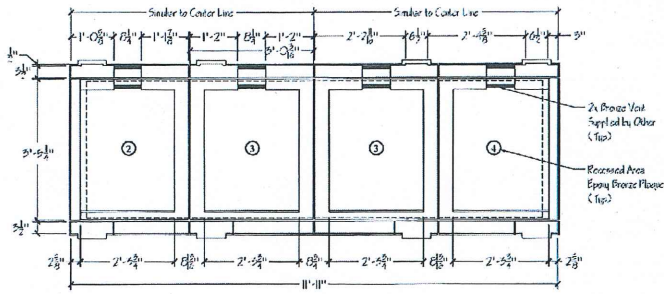
Accent Limestone & Carving  
Fabrication Mill

2255 Highway 43  
Spencer, IN 47460

Phone 812-829-5663 ~ Fax 812-829-3404

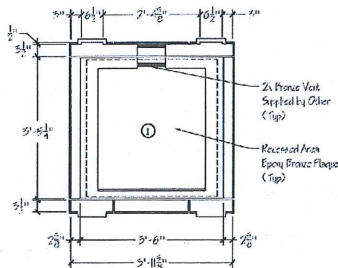
CONTRACTOR:	
FIG:	
FAX:	
ARCH/DRAW:	Charters of Freedom
LOCATION:	
ARCHITECT:	
STONE:	
FINISH:	Smooth
JOINTS:	3/8" Joint (Typ)
SCALE:	As Shown
DATE:	03-03-2015

STONE MARK:	JOB NO.
A	
	SHEET NO.
	1 of 2



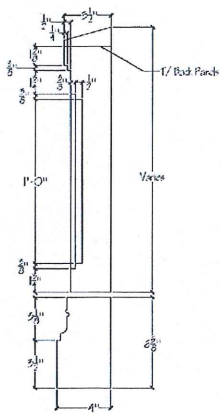
**FOUR PLAQUE PANEL DETAIL**

SCALE: 3/4" = 1'-0"



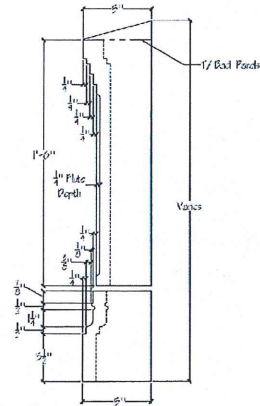
**SINGLE PLAQUE PANEL DETAIL**

SCALE: 3/4" = 1'-0"



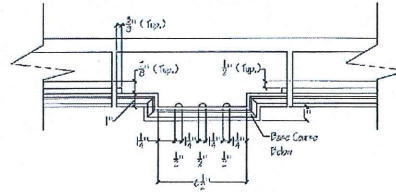
**3 PANEL ENLARGED DETAIL**

SCALE: 3" = 1'-0"



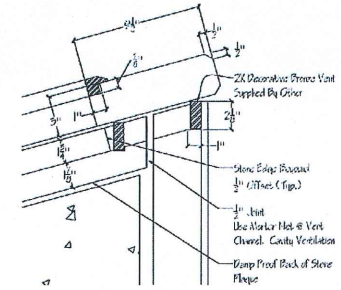
**4 PILASTER ENLARGED DETAIL**

SCALE: 3" = 1'-0"



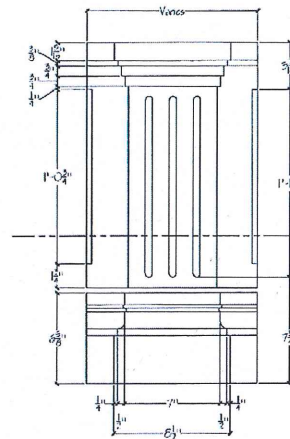
**1 PILASTER SECTION DETAIL**

SCALE: 3" = 1'-0"



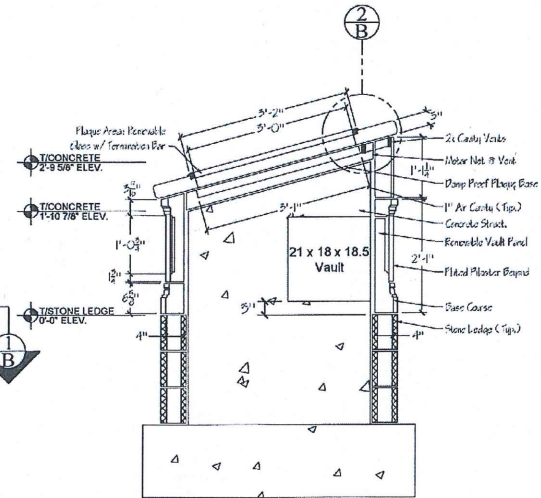
**2 PLAQUE BORDER DETAIL**

SCALE: 3" = 1'-0"



**5 PILASTER ENLARGED DETAIL**

SCALE: 3" = 1'-0"



**6 STRUCTURE SECTION DETAIL**

SCALE: 1" = 1'-0"

PRINT RECORD		
DATE	NO.	FOR
03-03-15	E-File	APPROVAL
03-18-15	E-File	REVISION 1.1
3-20-15	E-File	REVISION 2
3-30-15	E-File	SETTING
5-12-15	E-File	SETTING 1.1
5-17-15	E-File	SETTING 2.375

**NOTE**  
 ARCHITECT AND CONTRACTOR ARE RESPONSIBLE FOR VERIFICATION OF ALL DIMENSIONS AND CONDITIONS SHOWN ON THIS SHOP DRAWING. ACCENT LIMESTONE AND CARVING SHALL PROVIDE STONE EXACTLY AS PER APPROVED SUBMITTAL.

**Accent Limestone & Carving**  
 Fabrication Mill  
 2255 Highway 43  
 Spencer, IN 47460  
 Phone 812-829-5663 ~ Fax 812-829-3404

CONTRACTOR
PH:
FX:
BUILDING: Charters of Freedom
LOCATION:
ARCHITECT:
FINISH: Smooth
STONE: 3/8" Joint (Typ)
SCALE: As Shown
DATE: 03-03-2015

STONE MARK:	JOB NO.
<b>B</b>	SUBMIT NO.
	2 of 2

